

\$319,000 - 304 7611 Sparrow Drive, Leduc

MLS® #E4387572

\$319,000

0 Bedroom, 0.00 Bathroom,
Industrial on 0.00 Acres

West Commercial (Leduc), Leduc, AB

1381.79 sq/ft industrial bay located in the Northwest Commercial district of Leduc. Close to Nisku and the Edmonton International Airport. Set up with work shop, lunch/office space, washroom, and a large overhead door.

Built in 2008

Essential Information

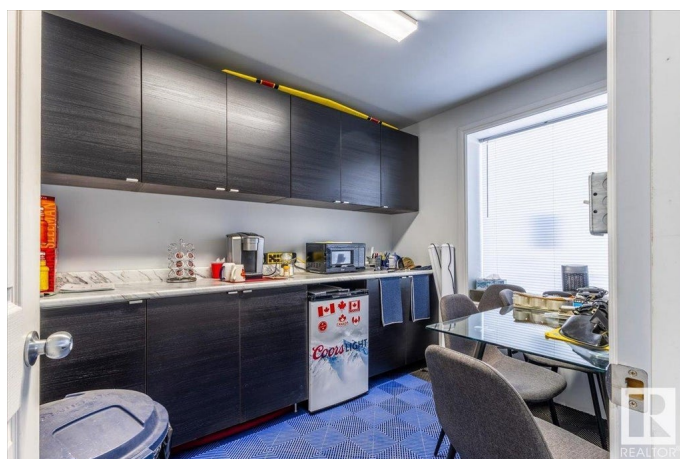
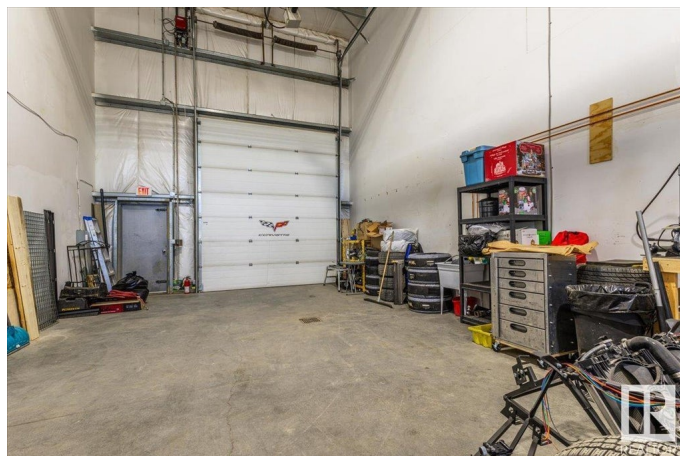
MLS® #	E4387572
Price	\$319,000
Bathrooms	0.00
Acres	0.00
Year Built	2008
Type	Industrial
Status	Active

Community Information

Address	304 7611 Sparrow Drive
Area	Leduc
Subdivision	West Commercial (Leduc)
City	Leduc
County	ALBERTA
Province	AB
Postal Code	T9E 8A5

Exterior

Exterior	Metal, Steel Frame
----------	--------------------



Construction Metal, Steel Frame

Additional Information

Date Listed May 15th, 2024

Days on Market 415

Zoning Zone 81

DATA IS DEEMED RELIABLE BUT IS NOT GUARANTEED ACCURATE BY THE REALTORS® ASSOCIATION OF EDMONTON. COPYRIGHT 2025 BY THE REALTORS® ASSOCIATION OF EDMONTON. ALL RIGHTS RESERVED.Trademarks are owned or controlled by the Canadian Real Estate Association (CREA) and identify real estate professionals who are members of CREA (REALTOR®, REALTORS®) and/or the quality of services they provide (MLS®, Multiple Listing Service®)

Listing information last updated on July 4th, 2025 at 10:18am MDT