

# \$129,900 - 35 10015 83 Avenue, Edmonton

MLS® #E4421074

**\$129,900**

1 Bedroom, 1.00 Bathroom, 452 sqft

Condo / Townhouse on 0.00 Acres

Strathcona, Edmonton, AB

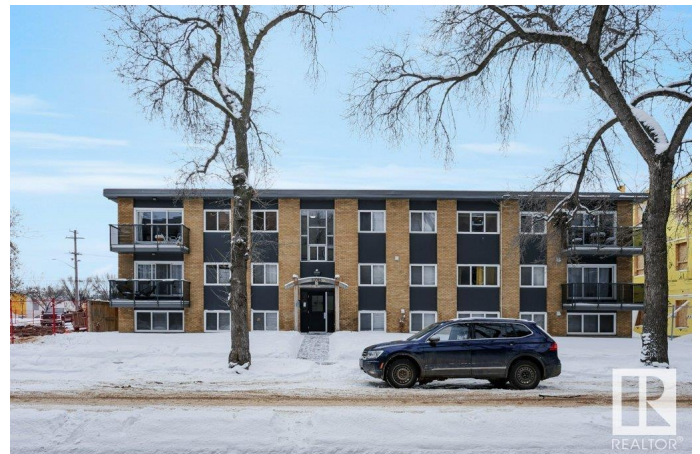
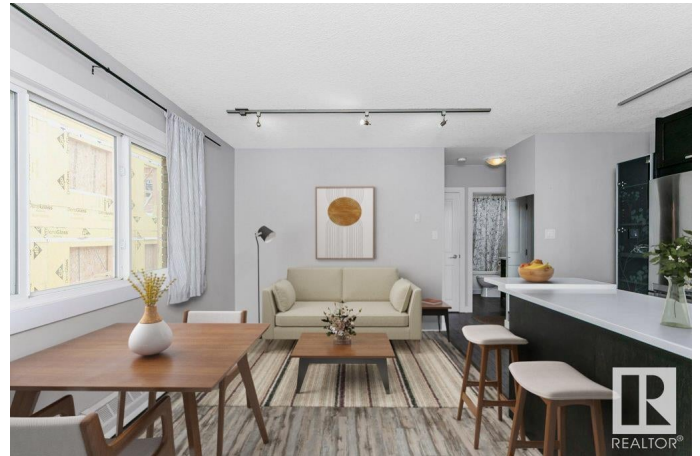
Attention Investors & Students! This charming 1-bedroom condo offers unbeatable value in an incredible location. Recent updates include a modernized kitchen, stylish flooring, upgraded appliances, and a refreshed bathroom—ready for you to move in! Nestled just minutes from Whyte Avenue, the vibrant Farmersâ€™ Market, trendy restaurants, and convenient public transportation, this is the perfect spot for city living. Plus, with the University of Alberta nearby, itâ€™s a prime opportunity for students or savvy investors.

Built in 1966

## Essential Information

MLS® #	E4421074
Price	\$129,900
Bedrooms	1
Bathrooms	1.00
Full Baths	1
Square Footage	452
Acres	0.00
Year Built	1966
Type	Condo / Townhouse
Sub-Type	Lowrise Apartment
Style	Single Level Apartment
Status	Active

## Community Information



Address	35 10015 83 Avenue
Area	Edmonton
Subdivision	Strathcona
City	Edmonton
County	ALBERTA
Province	AB
Postal Code	T6E 2C3

### **Amenities**

Amenities	Vinyl Windows
Parking Spaces	1
Parking	Stall

### **Interior**

Appliances	Euro Washer/Dryer Combo, Microwave Hood Fan, Oven-Built-In, Refrigerator, Stove-Countertop Electric
Heating	Hot Water, Natural Gas
# of Stories	3
Stories	1
Has Basement	Yes
Basement	None, No Basement

### **Exterior**

Exterior	Wood, Brick
Exterior Features	Back Lane, Flat Site, Public Transportation, Shopping Nearby
Roof	Tar & Gravel
Construction	Wood, Brick
Foundation	Concrete Perimeter

### **Additional Information**

Date Listed	February 11th, 2025
Days on Market	132
Zoning	Zone 15
Condo Fee	\$326

DATA IS DEEMED RELIABLE BUT IS NOT GUARANTEED ACCURATE BY THE REALTORS® ASSOCIATION OF EDMONTON. COPYRIGHT 2025 BY THE REALTORS® ASSOCIATION OF EDMONTON. ALL RIGHTS RESERVED. Trademarks are owned or controlled by the Canadian Real Estate Association (CREA) and identify real estate professionals who are members of CREA (REALTOR®, REALTORS®) and/or the quality of services they provide (MLS®, Multiple Listing Service®)

Listing information last updated on June 23rd, 2025 at 6:33pm MDT