

\$154,999 - 204 10149 Saskatchewan Drive, Edmonton

MLS® #E4423736

\$154,999

2 Bedroom, 2.00 Bathroom, 806 sqft

Condo / Townhouse on 0.00 Acres

Strathcona, Edmonton, AB

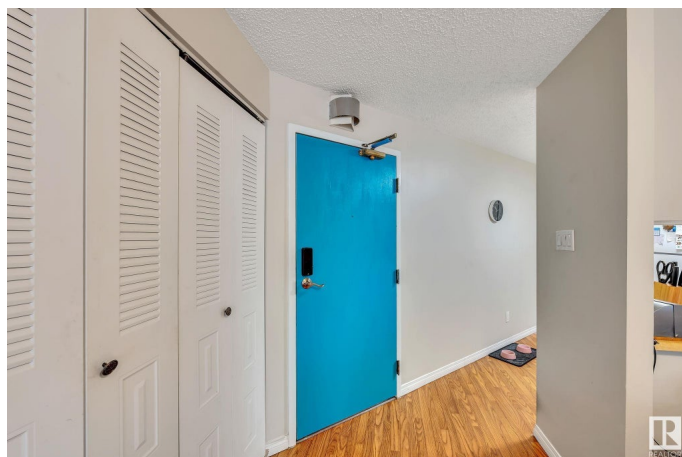
Well-maintained 2-bed, 2-bath (both ensuite) condo on Sask Drive in Waters Edge. The Building offers an on-site manager, security guard, ample visitor parking, gym, racquet/squash court, rooftop tennis/basketball courts, ravine trails, bike paths, and nearby parks. Minutes from U of A, Downtown, Kinsman Rec Centre, Whyte Ave shops, restaurants, and festivals. Assigned covered parking included. Excellent investment opportunity or comfortable living space for students/first-time buyers.

Built in 1981

Essential Information

MLS® #	E4423736
Price	\$154,999
Bedrooms	2
Bathrooms	2.00
Full Baths	2
Square Footage	806
Acres	0.00
Year Built	1981
Type	Condo / Townhouse
Sub-Type	Apartment High Rise
Style	Single Level Apartment
Status	Active

Community Information



Address	204 10149 Saskatchewan Drive
Area	Edmonton
Subdivision	Strathcona
City	Edmonton
County	ALBERTA
Province	AB
Postal Code	T6E 6B6

Amenities

Amenities	Exercise Room, No Smoking Home, Parking-Visitor, Racquet Courts, Recreation Room/Centre, Security Door, Security Personnel, Storage-In-Suite, Tennis Courts
Parking	Parkade

Interior

Interior Features	ensuite bathroom
Appliances	Dishwasher-Built-In, Hood Fan, Refrigerator, Stove-Electric
Heating	Hot Water, Natural Gas
# of Stories	19
Stories	1
Has Basement	Yes
Basement	None, No Basement

Exterior

Exterior	Concrete, Stucco
Exterior Features	Back Lane, Golf Nearby, Landscaped, Picnic Area, Playground Nearby, Public Swimming Pool, Public Transportation, River Valley View, Schools, Shopping Nearby, View City, View Downtown
Roof	Tar & Gravel
Construction	Concrete, Stucco
Foundation	Concrete Perimeter

Additional Information

Date Listed	March 3rd, 2025
Days on Market	65
Zoning	Zone 15
Condo Fee	\$677

DATA IS DEEMED RELIABLE BUT IS NOT GUARANTEED ACCURATE BY THE REALTORS® ASSOCIATION OF EDMONTON. COPYRIGHT 2025 BY THE REALTORS® ASSOCIATION OF EDMONTON. ALL RIGHTS RESERVED. Trademarks are owned or controlled by the Canadian Real Estate Association (CREA) and identify real

estate professionals who are members of CREA (REALTOR®®, REALTORS®®) and/or the quality of services they provide (MLS®®, Multiple Listing Service®®)

Listing information last updated on May 7th, 2025 at 2:03pm MDT