

# \$0 - 12855 141 Street, Edmonton

MLS® #E4424273

**\$0**

0 Bedroom, 0.00 Bathroom,  
Industrial on 0.00 Acres

Bonaventure Industrial, Edmonton, AB

6,830 sq.ft.± industrial bay with grade loading, featuring five offices, a showroom, a kitchenette, and warehouse space. The property has overhead gas-fired units in the warehouse and rooftop HVAC for the office. Conveniently located near St. Albert Trail, Yellowhead Highway, and Anthony Henday.

Built in 1974

## Essential Information

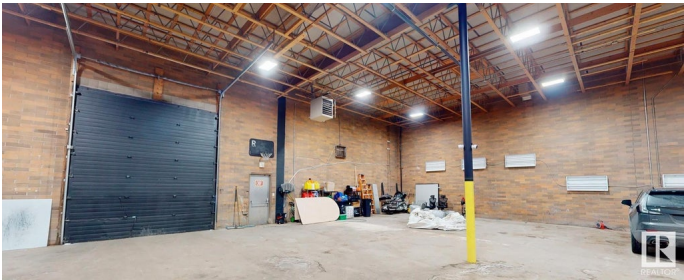
MLS® #	E4424273
Bathrooms	0.00
Acres	0.00
Year Built	1974
Type	Industrial
Status	Active

## Community Information

Address	12855 141 Street
Area	Edmonton
Subdivision	Bonaventure Industrial
City	Edmonton
County	ALBERTA
Province	AB
Postal Code	T5L 4N1

## Exterior

Exterior	Mixed
----------	-------



Construction           Mixed

**Additional Information**

Date Listed            March 5th, 2025

Days on Market       165

Zoning                 Zone 40

DATA IS DEEMED RELIABLE BUT IS NOT GUARANTEED ACCURATE BY THE REALTORS® ASSOCIATION OF EDMONTON. COPYRIGHT 2025 BY THE REALTORS® ASSOCIATION OF EDMONTON. ALL RIGHTS RESERVED.Trademarks are owned or controlled by the Canadian Real Estate Association (CREA) and identify real estate professionals who are members of CREA (REALTOR®, REALTORS®) and/or the quality of services they provide (MLS®, Multiple Listing Service®)

Listing information last updated on August 17th, 2025 at 3:17pm MDT