

## \$579,900 - 10337 176a Avenue, Edmonton

MLS® #E4428282

### \$579,900

3 Bedroom, 3.50 Bathroom, 2,106 sqft

Single Family on 0.00 Acres

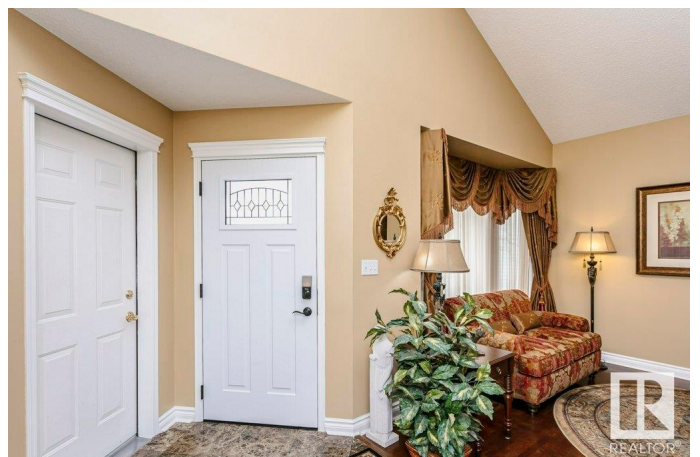
Elsinore, Edmonton, AB

Welcome Home! What a beauty this 2 Story home is. Located near parks, K- Grade 12 French School, St. Charles Catholic Church, Shopping, and quick access to the Anthony Henday, makes it co convenient for everyone. The dream kitchen includes quartz countertops, 2 Built In Ovens (still under warranty), oversized induction cooktop, and so much more. Of special note, the Poly B water lines have been professionally removed! Other features of this home include central A/C, built In vacuum, gas fireplace in the family room, main floor laundry room, composite deck, heated floors in primary ensuite, partial kitchen in the finished basement, California Closets, and Jack and Jill Bath upstairs. Quality throughout!

Built in 1992

### Essential Information

MLS® #	E4428282
Price	\$579,900
Bedrooms	3
Bathrooms	3.50
Full Baths	3
Half Baths	1
Square Footage	2,106
Acres	0.00



Year Built	1992
Type	Single Family
Sub-Type	Detached Single Family
Style	2 Storey
Status	Active

### Community Information

Address	10337 176a Avenue
Area	Edmonton
Subdivision	Elsinore
City	Edmonton
County	ALBERTA
Province	AB
Postal Code	T5X 5X3

### Amenities

Amenities	Air Conditioner, Closet Organizers, Deck, Gazebo, No Animal Home, No Smoking Home
Parking	Double Garage Attached

### Interior

Interior Features	ensuite bathroom
Appliances	Air Conditioning-Central, Dishwasher-Built-In, Dryer, Fan-Ceiling, Freezer, Garage Control, Garage Opener, Hood Fan, Vacuum System Attachments, Vacuum Systems, Washer, Window Coverings, Refrigerators-Two, Oven Built-In-Two, Stove-Countertop Inductn
Heating	Forced Air-1, Natural Gas
Stories	3
Has Basement	Yes
Basement	Full, Finished

### Exterior

Exterior	Wood, Stucco
Exterior Features	Fenced, Flat Site, Landscaped, Playground Nearby, Public Transportation, Schools, Shopping Nearby
Roof	Asphalt Shingles
Construction	Wood, Stucco
Foundation	Concrete Perimeter

### Additional Information

Date Listed March 31st, 2025

Days on Market 39

Zoning Zone 27

DATA IS DEEMED RELIABLE BUT IS NOT GUARANTEED ACCURATE BY THE REALTORS® ASSOCIATION OF EDMONTON. COPYRIGHT 2025 BY THE REALTORS® ASSOCIATION OF EDMONTON. ALL RIGHTS RESERVED. Trademarks are owned or controlled by the Canadian Real Estate Association (CREA) and identify real estate professionals who are members of CREA (REALTOR®, REALTORS®) and/or the quality of services they provide (MLS®, Multiple Listing Service®)

Listing information last updated on May 9th, 2025 at 5:32pm MDT