

\$958,800 - 9218 34 Avenue, Edmonton

MLS® #E4431695

\$958,800

0 Bedroom, 0.00 Bathroom,
Retail on 0.00 Acres

Strathcona Industrial Park, Edmonton, AB

Located in MILLWOODS PLAZA 34.
High-exposure retail condominium unit in the heart of the densely populated 34th ave in South Edmonton. This versatile space is ideal for a variety of business uses. Located in a high-demand corridor, well-managed complex with new roof (2024) , AMPLE parking, and convenient access to major transportation routes including Whitemud Drive and Gateway Blvd. Ideal for investors or owner-occupiers. The strip mall has diverse range of businesses including restaurants, grocery stores, travel agency, professional services and much more.

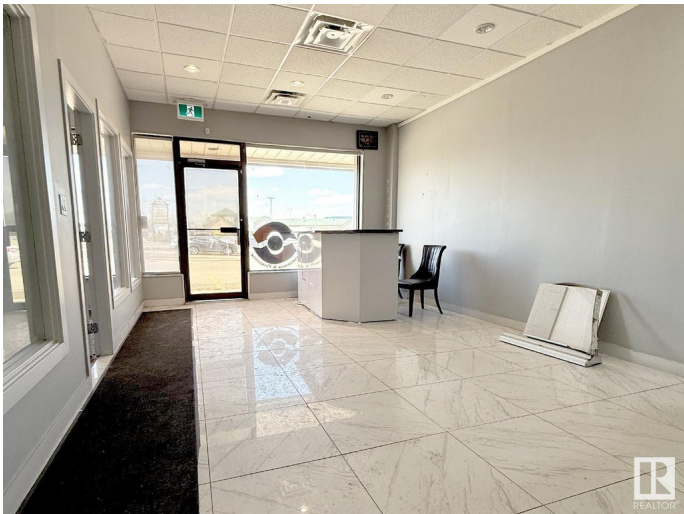
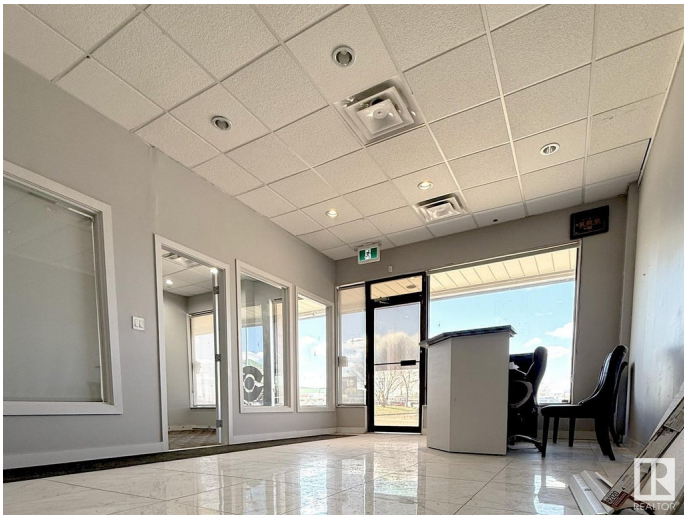
Built in 1981

Essential Information

MLS® #	E4431695
Price	\$958,800
Bathrooms	0.00
Acres	0.00
Year Built	1981
Type	Retail
Status	Active

Community Information

Address	9218 34 Avenue
Area	Edmonton
Subdivision	Strathcona Industrial Park



City	Edmonton
County	ALBERTA
Province	AB
Postal Code	T6E 5P2

Exterior

Exterior	Concrete, Wood Frame, Mixed
Construction	Concrete, Wood Frame, Mixed

Additional Information

Date Listed	April 17th, 2025
Days on Market	60
Zoning	Zone 41

DATA IS DEEMED RELIABLE BUT IS NOT GUARANTEED ACCURATE BY THE REALTORS® ASSOCIATION OF EDMONTON. COPYRIGHT 2025 BY THE REALTORS® ASSOCIATION OF EDMONTON. ALL RIGHTS RESERVED. Trademarks are owned or controlled by the Canadian Real Estate Association (CREA) and identify real estate professionals who are members of CREA (REALTOR®, REALTORS®) and/or the quality of services they provide (MLS®, Multiple Listing Service®)

Listing information last updated on June 16th, 2025 at 1:02pm MDT