

\$735,000 - 4604 56 Avenue, Wetaskiwin

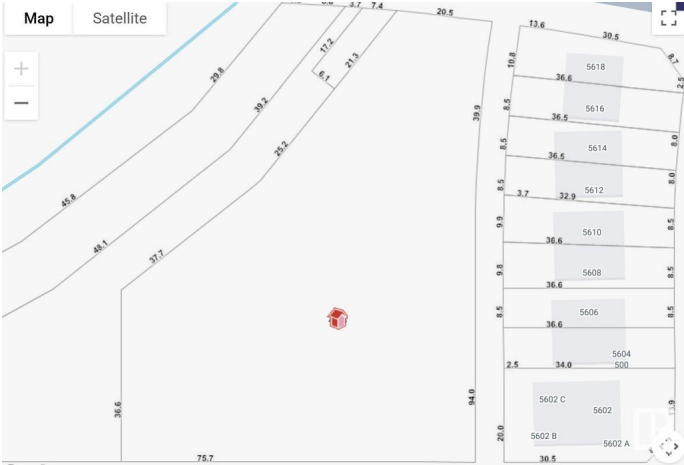
MLS® #E4433121

\$735,000

0 Bedroom, 0.00 Bathroom,
Land Commercial on 0.00 Acres

Garden Meadows, Wetaskiwin, AB

Rare development opportunity. 1.33 Acres of high-density multi-family development land zoned R4 allowing up to 6 storeys of development in the Northeast quadrant of Wetaskiwin’s Garden Meadows subdivision. The October 2024 CMHC rental market summary notes a 2.4% vacancy rate, with recent population growth since the census of 12,594 in 2021. The city has lacked new multi-unit housing options in recent years. Wetaskiwin’s economy is driven by a mix of agriculture, manufacturing and warehousing, with a retail sector. Recent growth has seen 42 new business openings in 2023, and 27 business openings in 2024 adding new employment. The site is well positioned within walking distance to Norwood Elementary, Wetaskiwin Composite High School, Wetaskiwin Recreation Complex, and 50th Ave, the main avenue serving Wetaskiwin’s Old Town where you’ll find City Hall, rich with heritage, amenities, and services. The Garden Meadows neighbourhood is known as the newer & quieter side of Wetaskiwin containing new SF homes.



Essential Information

MLS® #	E4433121
Price	\$735,000

Bathrooms	0.00
Acres	0.00
Type	Land Commercial
Status	Active

Community Information

Address	4604 56 Avenue
Area	Wetaskiwin
Subdivision	Garden Meadows
City	Wetaskiwin
County	ALBERTA
Province	AB
Postal Code	T9A 3S5

Additional Information

Date Listed	April 28th, 2025
Days on Market	114
Zoning	Zone 80

DATA IS DEEMED RELIABLE BUT IS NOT GUARANTEED ACCURATE BY THE REALTORS® ASSOCIATION OF EDMONTON. COPYRIGHT 2025 BY THE REALTORS® ASSOCIATION OF EDMONTON. ALL RIGHTS RESERVED. Trademarks are owned or controlled by the Canadian Real Estate Association (CREA) and identify real estate professionals who are members of CREA (REALTOR®, REALTORS®) and/or the quality of services they provide (MLS®, Multiple Listing Service®)

Listing information last updated on August 20th, 2025 at 5:17am MDT