

# **\$127,000 - 410 10883 Saskatchewan Drive, Edmonton**

MLS® #E4433200

**\$127,000**

1 Bedroom, 1.00 Bathroom, 713 sqft

Condo / Townhouse on 0.00 Acres

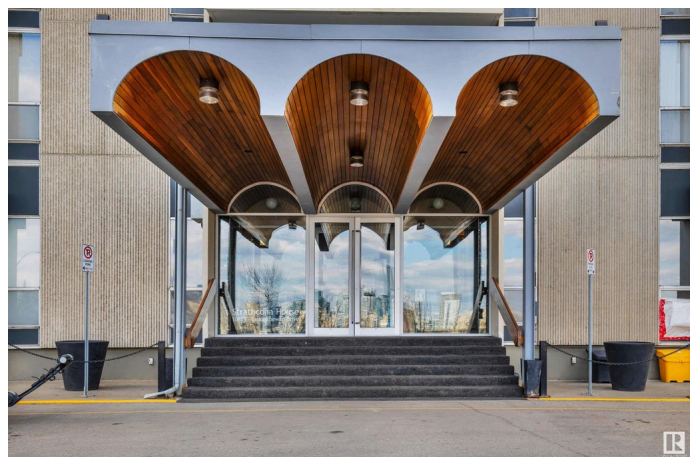
Garneau, Edmonton, AB

Strathcona House Popular High Rise  
Located On Saskatchewan Drive Just off the  
South End of the High Level Bridge . 1  
Bedroom End Unit Located on the 4th Floor.  
713 Sq. Ft. Generous Size Without  
Compromise. Just Completed Decorating /  
Paint Job by a Professional. Laminate  
Flooring ,Ceramic Tile, Full Appliance  
Package. South Facing Balcony. Well  
Appointed Work - Out Room for Wellness,  
Serene Large Outdoor Garden, Bar B Que  
Area .. Don't Miss It . Monthly Condominium  
Fee Inclusive of All Utilities !! Neutral  
Cabinetry. Ideal Location for Medical  
Professionals (Mackenzie, Stollery) Students ( University of Alberta) Walking Distance. Steps  
to the River Valley Trail System, The Vibrant  
Whyte Avenue Seen. Restaurants, Coffee,  
Chai Shops, Grocery Store, All Services.  
Outdoor Parking Stall 95. Calling STUDENTS  
/ INVESTORS !! Immediate Availability.  
10883 - Saskatchewan Drive

Built in 1968

## **Essential Information**

MLS® #	E4433200
Price	\$127,000
Bedrooms	1
Bathrooms	1.00



Full Baths	1
Square Footage	713
Acres	0.00
Year Built	1968
Type	Condo / Townhouse
Sub-Type	Apartment High Rise
Style	Single Level Apartment
Status	Active

### **Community Information**

Address	410 10883 Saskatchewan Drive
Area	Edmonton
Subdivision	Garneau
City	Edmonton
County	ALBERTA
Province	AB
Postal Code	T6E 4S6

### **Amenities**

Amenities	Exercise Room, Gazebo, No Animal Home, No Smoking Home, Parking-Plug-Ins, Parking-Visitor, Patio, Security Door, See Remarks
Parking Spaces	1
Parking	Stall, See Remarks

### **Interior**

Appliances	Oven-Microwave, Refrigerator, Stove-Electric
Heating	Hot Water, Natural Gas
# of Stories	20
Stories	1
Has Basement	Yes
Basement	None, No Basement

### **Exterior**

Exterior	Concrete
Exterior Features	Landscaped, Park/Reserve, Picnic Area, Recreation Use, Schools, Shopping Nearby, View City, View Downtown, See Remarks
Roof	Asphalt Shingles
Construction	Concrete
Foundation	Concrete Perimeter

**Additional Information**

Date Listed	April 28th, 2025
Days on Market	5
Zoning	Zone 15
Condo Fee	\$671

DATA IS DEEMED RELIABLE BUT IS NOT GUARANTEED ACCURATE BY THE REALTORS® ASSOCIATION OF EDMONTON. COPYRIGHT 2025 BY THE REALTORS® ASSOCIATION OF EDMONTON. ALL RIGHTS RESERVED.Trademarks are owned or controlled by the Canadian Real Estate Association (CREA) and identify real estate professionals who are members of CREA (REALTOR®, REALTORS®) and/or the quality of services they provide (MLS®, Multiple Listing Service®)

Listing information last updated on May 3rd, 2025 at 1:02pm MDT