

\$390,000 - 20 11910 35 Avenue, Edmonton

MLS® #E4434115

\$390,000

4 Bedroom, 2.50 Bathroom, 1,548 sqft
Condo / Townhouse on 0.00 Acres

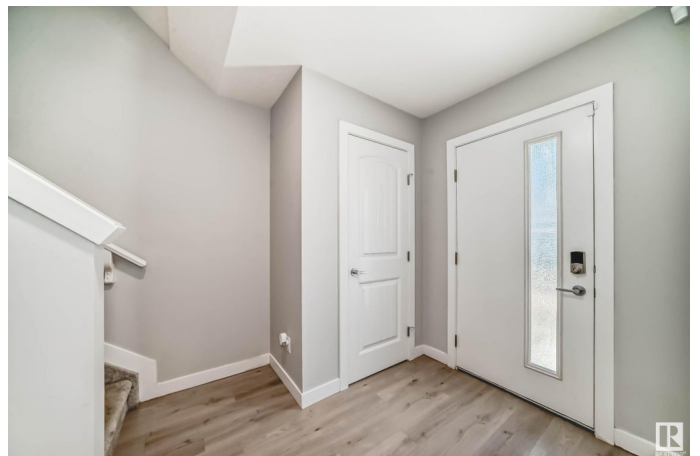
Heritage Valley Town Centre Area, Edmonton,
AB

Welcome to The Enclave, Landmark Homesâ€™™ latest townhome community in Desrochers. This thoughtfully designed 3-storey townhome features 3 bedrooms, 2.5 bathrooms, a double attached garage, and a fully fenced west-facing yard. Step inside to 9-foot ceilings that create an open, airy atmosphere, complemented by quartz countertops and stylish railings throughout. The modern kitchen flows seamlessly into the eat-in dining area with direct access to a balconyâ€™”perfect for entertaining or relaxing. Upstairs, the primary suite offers a sunlit ensuite and a generous walk-in closet. Additional highlights include second-floor laundry, a linen closet, and a versatile flex room on the main level, ideal for a home office or gym. Enjoy maintenance-free living with landscaping and snow removal included. Conveniently located just steps from Dr. Anne Anderson Public High School and the Community Centre, this home is perfectly positioned for modern family living.

Built in 2022

Essential Information

| | |
|--------|-----------|
| MLS® # | E4434115 |
| Price | \$390,000 |



| | |
|----------------|-------------------|
| Bedrooms | 4 |
| Bathrooms | 2.50 |
| Full Baths | 2 |
| Half Baths | 1 |
| Square Footage | 1,548 |
| Acres | 0.00 |
| Year Built | 2022 |
| Type | Condo / Townhouse |
| Sub-Type | Townhouse |
| Style | 3 Storey |
| Status | Active |

Community Information

| | |
|-------------|----------------------------------|
| Address | 20 11910 35 Avenue |
| Area | Edmonton |
| Subdivision | Heritage Valley Town Centre Area |
| City | Edmonton |
| County | ALBERTA |
| Province | AB |
| Postal Code | T6W 4Z8 |

Amenities

| | |
|-----------|---|
| Amenities | On Street Parking, Front Porch, Parking-Visitor, Storage-In-Suite |
| Parking | Double Garage Attached |

Interior

| | |
|-------------------|--|
| Interior Features | ensuite bathroom |
| Appliances | Dishwasher-Built-In, Dryer, Garage Control, Refrigerator, Stove-Electric, Washer, Window Coverings |
| Heating | Forced Air-1, Natural Gas |
| Stories | 3 |
| Has Basement | Yes |
| Basement | None, No Basement |

Exterior

| | |
|-------------------|---|
| Exterior | Wood, Vinyl |
| Exterior Features | Fenced, Landscaped, Low Maintenance Landscape, Schools, Shopping Nearby |
| Roof | Asphalt Shingles |

| | |
|--------------|--------------------|
| Construction | Wood, Vinyl |
| Foundation | Concrete Perimeter |

Additional Information

| | |
|----------------|---------------|
| Date Listed | May 2nd, 2025 |
| Days on Market | 12 |
| Zoning | Zone 55 |
| Condo Fee | \$242 |

DATA IS DEEMED RELIABLE BUT IS NOT GUARANTEED ACCURATE BY THE REALTORS® ASSOCIATION OF EDMONTON. COPYRIGHT 2025 BY THE REALTORS® ASSOCIATION OF EDMONTON. ALL RIGHTS RESERVED.Trademarks are owned or controlled by the Canadian Real Estate Association (CREA) and identify real estate professionals who are members of CREA (REALTOR®, REALTORS®) and/or the quality of services they provide (MLS®, Multiple Listing Service®)

Listing information last updated on May 14th, 2025 at 12:02pm MDT