

## \$469,900 - 7220 152a Ave, Edmonton

MLS® #E4434958

**\$469,900**

7 Bedroom, 1.50 Bathroom, 1,302 sqft

Single Family on 0.00 Acres

Kilkenny, Edmonton, AB

Welcome to this beautifully renovated bungalow nestled in the heart of Kilkenny, one of Edmonton's most family-oriented communities. Situated on a quiet cul-de-sac lot, this home offers the perfect blend of comfort, style, and convenience – ideal for growing families or seniors. Step inside to discover a bright and modern interior featuring brand-new windows, doors, lighting, and interior finishes throughout. The open-concept kitchen comes fully equipped with new appliances and stylish cabinetry, perfect for both everyday living and entertaining. This spacious home offers 4 bedrooms, including a primary suite with a private half-bathroom. The main bathroom is generously sized and fully updated to match the home's modern feel. Enjoy natural light all day long thanks to the large windows in the living room, creating a warm and inviting atmosphere. Partially finished basement is framed and dry walled for 3 bedrooms, 1 full bath and 1 massive living room with kitchen. Must see property!!

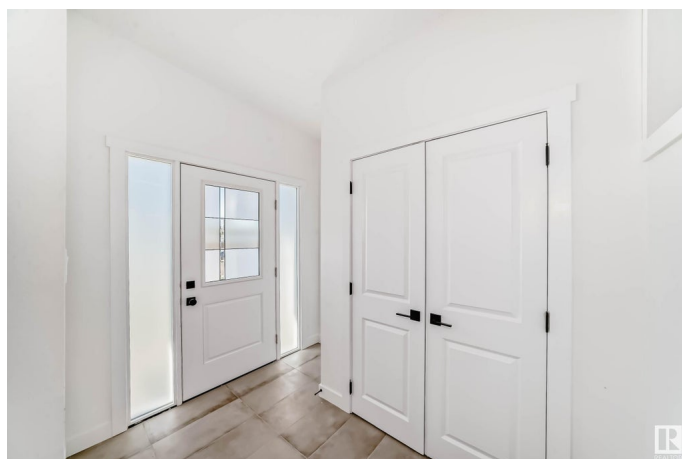
Built in 1970

### Essential Information

MLS® # E4434958

Price \$469,900

Bedrooms 7



Bathrooms	1.50
Full Baths	1
Half Baths	1
Square Footage	1,302
Acres	0.00
Year Built	1970
Type	Single Family
Sub-Type	Detached Single Family
Style	Bungalow
Status	Active

### Community Information

Address	7220 152a Ave
Area	Edmonton
Subdivision	Kilkenny
City	Edmonton
County	ALBERTA
Province	AB
Postal Code	T5C 2Z4

### Amenities

Amenities	No Animal Home, No Smoking Home
Parking	Single Garage Attached

### Interior

Interior Features	ensuite bathroom
Appliances	Dishwasher-Built-In, Garage Control, Garage Opener, Microwave Hood Fan, Refrigerator, Stacked Washer/Dryer, Stove-Electric
Heating	Forced Air-1, Natural Gas
Stories	2
Has Basement	Yes
Basement	Full, Partially Finished

### Exterior

Exterior	Wood, Stucco, Vinyl
Exterior Features	Back Lane, Fenced, Landscaped, Playground Nearby, Public Transportation, Schools, Shopping Nearby
Roof	Tar & Gravel
Construction	Wood, Stucco, Vinyl

Foundation                      Concrete Perimeter

**Additional Information**

Date Listed                      May 7th, 2025

Days on Market                76

Zoning                            Zone 02

DATA IS DEEMED RELIABLE BUT IS NOT GUARANTEED ACCURATE BY THE REALTORS® ASSOCIATION OF EDMONTON. COPYRIGHT 2025 BY THE REALTORS® ASSOCIATION OF EDMONTON. ALL RIGHTS RESERVED.Trademarks are owned or controlled by the Canadian Real Estate Association (CREA) and identify real estate professionals who are members of CREA (REALTOR®, REALTORS®) and/or the quality of services they provide (MLS®, Multiple Listing Service®)

Listing information last updated on July 22nd, 2025 at 3:32am MDT