

\$1,098,000 - 10725 & 10727 113 Street, Edmonton

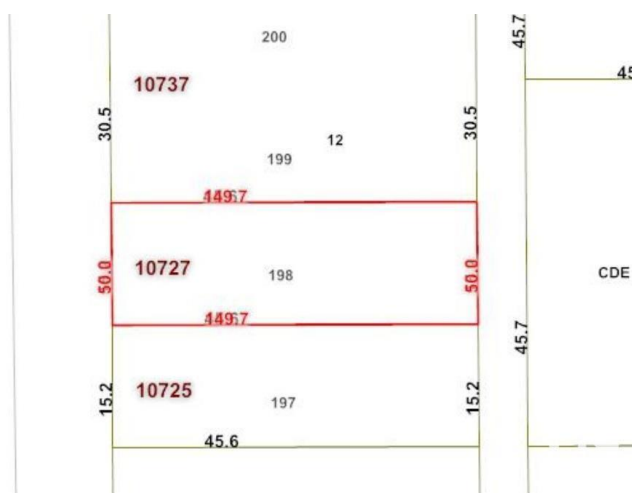
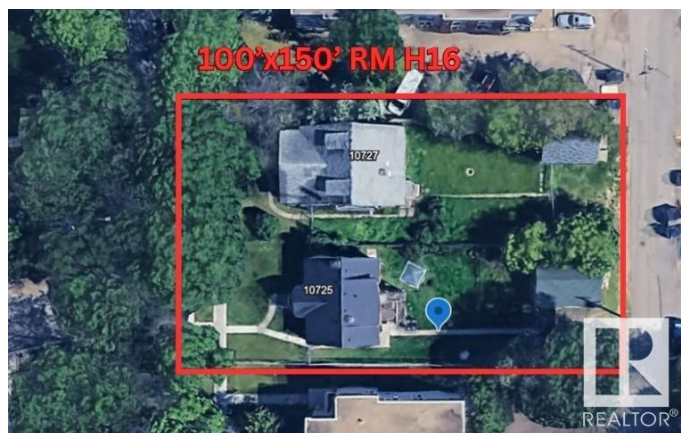
MLS® #E4435667

\$1,098,000

0 Bedroom, 0.00 Bathroom,
Land Commercial on 0.00 Acres

Queen Mary Park, Edmonton, AB

100'x150' RM H16 Medium Scale Residential zoned lots in Queen Mary Park. Great potential for CMHC MLI "apartment building, 4plex w/ legal basement suites, skinnies, lots of opportunities to maximize your investment. This location is excellent for future redevelopment, close to amenities, public transit, LRT, minutes from downtown & in a neighbourhood where other redevelopment is already happening & more being planned all the time. Take advantage of the City encouraging higher density & development & secure your next project! One home has current rental income & long term tenants



Built in 1927

Essential Information

| | |
|------------|-----------------|
| MLS® # | E4435667 |
| Price | \$1,098,000 |
| Bathrooms | 0.00 |
| Acres | 0.00 |
| Year Built | 1927 |
| Type | Land Commercial |
| Status | Active |

Community Information

| | |
|---------|--------------------------|
| Address | 10725 & 10727 113 Street |
| Area | Edmonton |

| | |
|-------------|-----------------|
| Subdivision | Queen Mary Park |
| City | Edmonton |
| County | ALBERTA |
| Province | AB |
| Postal Code | T5H 3H9 |

Exterior

| | |
|--------------|------------|
| Exterior | Wood Frame |
| Construction | Wood Frame |

Additional Information

| | |
|----------------|---------------|
| Date Listed | May 9th, 2025 |
| Days on Market | 103 |
| Zoning | Zone 08 |

DATA IS DEEMED RELIABLE BUT IS NOT GUARANTEED ACCURATE BY THE REALTORS® ASSOCIATION OF EDMONTON. COPYRIGHT 2025 BY THE REALTORS® ASSOCIATION OF EDMONTON. ALL RIGHTS RESERVED. Trademarks are owned or controlled by the Canadian Real Estate Association (CREA) and identify real estate professionals who are members of CREA (REALTOR®, REALTORS®) and/or the quality of services they provide (MLS®, Multiple Listing Service®)

Listing information last updated on August 19th, 2025 at 11:47pm MDT