

\$559,000 - 10411 21 Avenue, Edmonton

MLS® #E4437029

\$559,000

4 Bedroom, 4.00 Bathroom, 2,121 sqft

Single Family on 0.00 Acres

Keheewin, Edmonton, AB

Welcome to this spacious family home located in the Keheewin community. The main floor showcases a stunning open-to-above living area, a wood-finished kitchen complemented by two dining areas, and a family area that includes an indoor fireplace. This floor also contains an additional room and a full bathroom as well. Upstairs, you can enjoy the two bedrooms and a full bathroom, plus an ensuite, which includes a jacuzzi. The finished walk-out basement features a second kitchen, a full bathroom, 2 additional rooms, and a large living area. Furthermore, there is a large deck area followed by the backyard, which includes a fire pit, outdoor hot tub connection, and a shed for storage. The front yard includes a driveway connecting to the double-attached heated garage (2023) and a porch area. Along with the recently completed vinyl flooring (2024), the house also offers new washers and dryers for the main floor and basement, two new furnaces (2021), & a new water tank (2020). (id:31684)

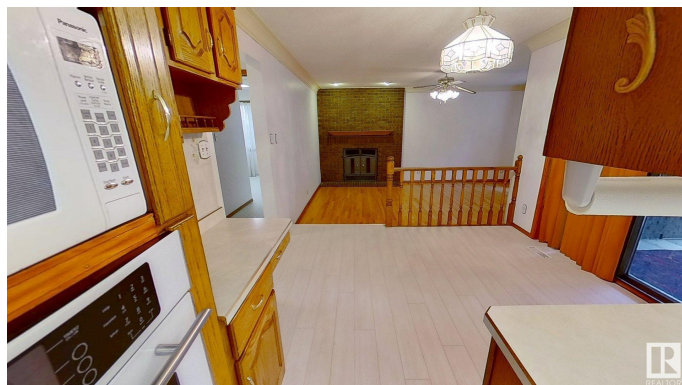
Built in 1983

Essential Information

MLS® # E4437029

Price \$559,000

Bedrooms 4



| | |
|----------------|------------------------|
| Bathrooms | 4.00 |
| Full Baths | 4 |
| Square Footage | 2,121 |
| Acres | 0.00 |
| Year Built | 1983 |
| Type | Single Family |
| Sub-Type | Detached Single Family |
| Style | 2 Storey |
| Status | Active |

Community Information

| | |
|-------------|-----------------|
| Address | 10411 21 Avenue |
| Area | Edmonton |
| Subdivision | Keheewin |
| City | Edmonton |
| County | ALBERTA |
| Province | AB |
| Postal Code | T6J 5E9 |

Amenities

| | |
|-----------|--------------------------------------------------------------------------------------------------------------------------------------------------------------------------------------------|
| Amenities | Carbon Monoxide Detectors, Ceiling 10 ft., Closet Organizers, Deck, Detectors Smoke, Fire Pit, Hot Water Natural Gas, Security Door, Television Connection, Walkout Basement, Wood Windows |
| Parking | Double Garage Attached |

Interior

| | |
|-------------------|--------------------------------------------------------------------------------------------------------------------------------------------------------------------------------------------------------------------------------------------------------|
| Interior Features | ensuite bathroom |
| Appliances | Alarm/Security System, Dishwasher-Built-In, Dryer, Garage Opener, Hood Fan, Humidifier-Power(Furnace), Oven-Built-In, Oven-Microwave, Refrigerator, Satellite TV Dish, Storage Shed, Stove-Countertop Electric, Stove-Electric, Vacuum Systems, Washer |
| Heating | Forced Air-1, Natural Gas |
| Fireplace | Yes |
| Fireplaces | Glass Door, Stone Facing, Woodstove |
| Stories | 3 |
| Has Basement | Yes |
| Basement | Full, Finished |

Exterior

| | |
|----------|------------------------|
| Exterior | Concrete, Brick, Vinyl |
|----------|------------------------|

| | |
|-------------------|-----------------------------------------------------------------------------|
| Exterior Features | Fenced, Fruit Trees/Shrubs, Public Transportation, Schools, Shopping Nearby |
| Roof | Asphalt Shingles |
| Construction | Concrete, Brick, Vinyl |
| Foundation | Concrete Perimeter |

Additional Information

| | |
|----------------|----------------|
| Date Listed | May 16th, 2025 |
| Days on Market | 53 |
| Zoning | Zone 16 |

DATA IS DEEMED RELIABLE BUT IS NOT GUARANTEED ACCURATE BY THE REALTORS® ASSOCIATION OF EDMONTON. COPYRIGHT 2025 BY THE REALTORS® ASSOCIATION OF EDMONTON. ALL RIGHTS RESERVED.Trademarks are owned or controlled by the Canadian Real Estate Association (CREA) and identify real estate professionals who are members of CREA (REALTOR®, REALTORS®) and/or the quality of services they provide (MLS®, Multiple Listing Service®)

Listing information last updated on July 8th, 2025 at 12:02am MDT