

## \$639,900 - 166 Hayward Crescent, Edmonton

MLS® #E4437819

**\$639,900**

3 Bedroom, 2.50 Bathroom, 2,176 sqft

Single Family on 0.00 Acres

Hodgson, Edmonton, AB

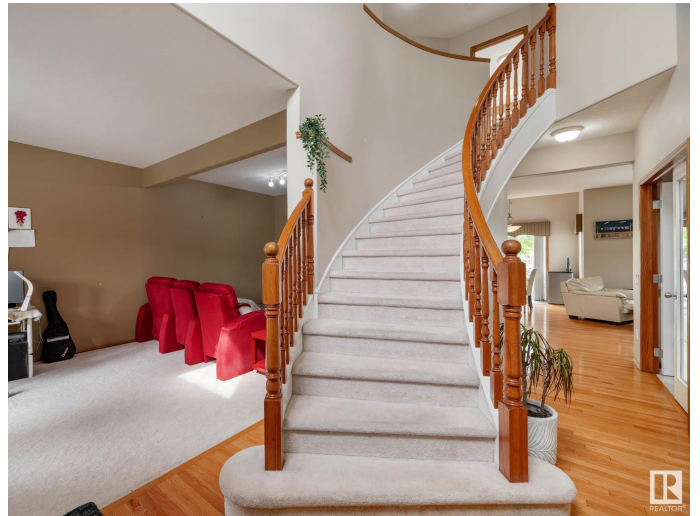
This former Homes by Avi show home offers over 2100 sq ft of well-designed living space in the sought-after community of Hodgson, a prime southwest Edmonton location close to parks, trails, schools, shopping & transit. The main floor features a grand foyer with feature curved staircase, a den/office/playroom, adjoining living room & formal dining room perfect of entertaining, a spacious kitchen with a moveable island, a breakfast nook & a cozy family room with a brick facing gas fireplace. Upstairs, you'll find three generous-sized bedrooms including a primary suite with a soaker tub, walk-in closet & raised seating area. The basement is unspoiled & ready for future development. The fully fenced yard includes a deck perfect for summer BBQ's & entertaining. Recent upgrades include a new roof in 22' & new kitchen appliances: fridge, stove & dishwasher in 23'. The double attached garage is finished for added convenience. This is a well-built family home offering comfort, space & an unbeatable location.

Built in 2002

### Essential Information

MLS® # E4437819

Price \$639,900



Bedrooms	3
Bathrooms	2.50
Full Baths	2
Half Baths	1
Square Footage	2,176
Acres	0.00
Year Built	2002
Type	Single Family
Sub-Type	Detached Single Family
Style	2 Storey
Status	Active

### Community Information

Address	166 Hayward Crescent
Area	Edmonton
Subdivision	Hodgson
City	Edmonton
County	ALBERTA
Province	AB
Postal Code	T6R 3G2

### Amenities

Amenities	Off Street Parking, Air Conditioner, No Smoking Home, Secured Parking
Parking	Double Garage Attached

### Interior

Interior Features	ensuite bathroom
Appliances	Air Conditioning-Central, Dishwasher-Built-In, Dryer, Garage Opener, Hood Fan, Refrigerator, Stove-Electric, Washer, Window Coverings
Heating	Forced Air-1, Natural Gas
Fireplace	Yes
Fireplaces	Mantel
Stories	2
Has Basement	Yes
Basement	Full, Unfinished

### Exterior

Exterior	Wood, Vinyl
Exterior Features	Fenced, Flat Site, Low Maintenance Landscape, No Back Lane,

	Playground Nearby, Public Swimming Pool, Public Transportation, Schools, Shopping Nearby
Roof	Asphalt Shingles
Construction	Wood, Vinyl
Foundation	Concrete Perimeter

### **Additional Information**

Date Listed	May 22nd, 2025
Days on Market	55
Zoning	Zone 14
HOA Fees	175
HOA Fees Freq.	Annually

DATA IS DEEMED RELIABLE BUT IS NOT GUARANTEED ACCURATE BY THE REALTORS® ASSOCIATION OF EDMONTON. COPYRIGHT 2025 BY THE REALTORS® ASSOCIATION OF EDMONTON. ALL RIGHTS RESERVED. Trademarks are owned or controlled by the Canadian Real Estate Association (CREA) and identify real estate professionals who are members of CREA (REALTOR®, REALTORS®) and/or the quality of services they provide (MLS®, Multiple Listing Service®)

Listing information last updated on July 15th, 2025 at 11:32pm MDT