

\$209,000 - 205 8515 99 Street, Edmonton

MLS® #E4437960

\$209,000

1 Bedroom, 1.00 Bathroom, 618 sqft

Condo / Townhouse on 0.00 Acres

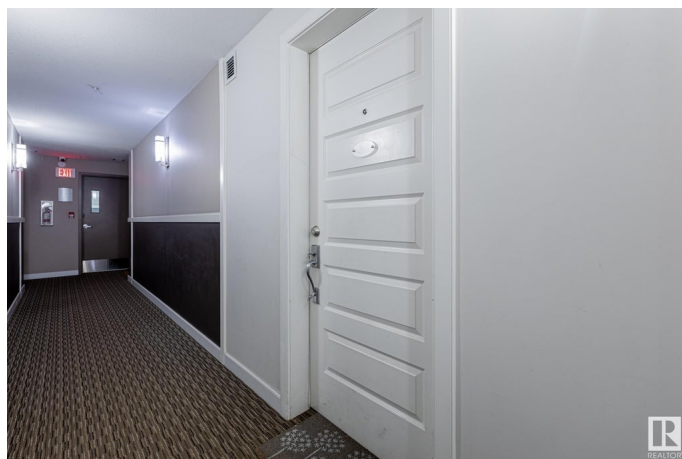
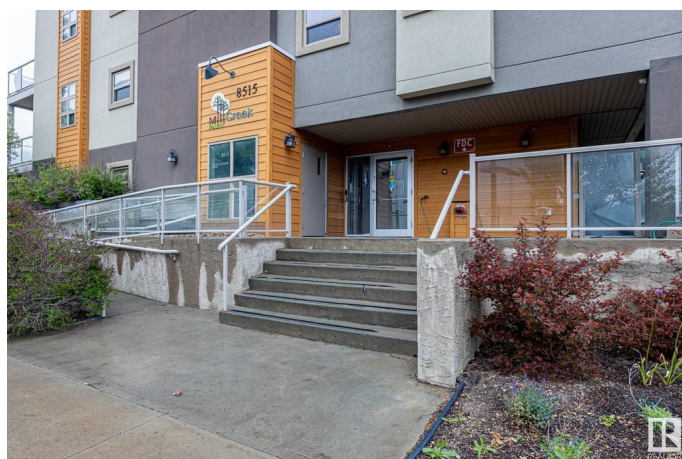
Strathcona, Edmonton, AB

MINT condition, PET FRIENDLY, 1 Bed 1 Bath SOUTH FACING 2nd floor unit with a Titled UNDERGROUND stall + storage cage, and a spacious patio with a Gas Line! High end finishes throughout, with luxury vinyl floors, nice window coverings, quartz counter tops, soaker tub, large open concept kitchen, stainless appliances, and INSUITE LAUNDRY! Welcome to Millcreek Park! Built in 2011, this beautifully designed building has been thoroughly maintained, with a unique roof top patio common area space, and a car wash bay! Only a few seconds walk to Millcreek ravine, and walking distance to the UofA! Enjoy the whyte Ave vibes, unique shopping opportunities and quick commute to both the UofA and Downtown Edmonton in this safe, well maintained complex!

Built in 2011

Essential Information

MLS® #	E4437960
Price	\$209,000
Bedrooms	1
Bathrooms	1.00
Full Baths	1
Square Footage	618
Acres	0.00
Year Built	2011



Type	Condo / Townhouse
Sub-Type	Lowrise Apartment
Style	Single Level Apartment
Status	Active

Community Information

Address	205 8515 99 Street
Area	Edmonton
Subdivision	Strathcona
City	Edmonton
County	ALBERTA
Province	AB
Postal Code	T6E 3T7

Amenities

Amenities	Ceiling 9 ft., Deck, Detectors Smoke, Intercom, No Animal Home, No Smoking Home, Parking-Visitor, Security Door, Social Rooms, Sprinkler System-Fire, Vinyl Windows, Natural Gas BBQ Hookup
Parking Spaces	1
Parking	Heated, Underground

Interior

Appliances	Dishwasher-Built-In, Hood Fan, Refrigerator, Stove-Electric, Window Coverings
Heating	Baseboard, Natural Gas
# of Stories	4
Stories	1
Has Basement	Yes
Basement	None, No Basement

Exterior

Exterior	Wood, Fiber Cement, Stucco
Exterior Features	Back Lane, Golf Nearby, Playground Nearby, Private Setting, Public Transportation, Schools, Shopping Nearby, Treed Lot
Roof	Tar & Gravel
Construction	Wood, Fiber Cement, Stucco
Foundation	Concrete Perimeter

Additional Information

Date Listed	May 21st, 2025
-------------	----------------

Days on Market	29
Zoning	Zone 15
Condo Fee	\$620

DATA IS DEEMED RELIABLE BUT IS NOT GUARANTEED ACCURATE BY THE REALTORS® ASSOCIATION OF EDMONTON. COPYRIGHT 2025 BY THE REALTORS® ASSOCIATION OF EDMONTON. ALL RIGHTS RESERVED. Trademarks are owned or controlled by the Canadian Real Estate Association (CREA) and identify real estate professionals who are members of CREA (REALTOR®, REALTORS®) and/or the quality of services they provide (MLS®, Multiple Listing Service®)

Listing information last updated on June 19th, 2025 at 8:32pm MDT