

## \$649,900 - 8818 180a Avenue, Edmonton

MLS® #E4441016

**\$649,900**

4 Bedroom, 3.00 Bathroom, 2,629 sqft

Single Family on 0.00 Acres

Klarvatten, Edmonton, AB

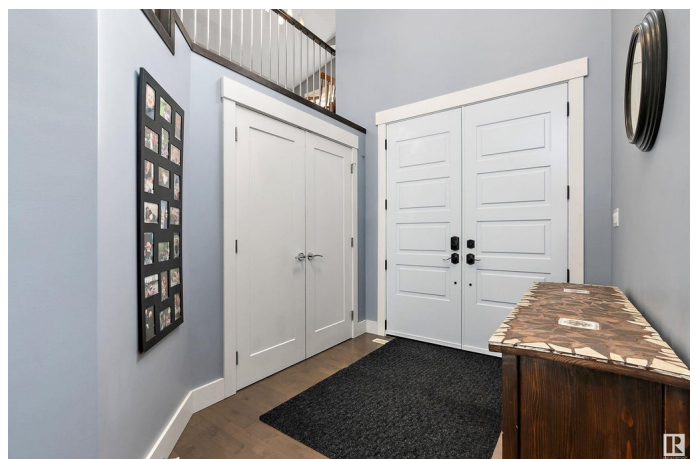
Spacious air conditioned 2-storey in Klarvatten with 2,630 square feet of comfort! Features 3 oversized bedrooms and a huge upstairs bonus room, main floor den (could be used as 4th main floor bedroom, with a 3 piece bathroom with shower also on the main floor), and elegant hardwood & ceramic tile throughout. Enjoy peace of mind with new windows (2023) and a new furnace (Jan 2024). The kitchen boasts granite, maple cabinetry, a pantry, & stainless steel appliances (2018). It's open to the large dining and living room centred on a gas fireplace. The upstairs laundry has a sink and washer/dryer (2020). Triple attached garage with tandem stall (20'x34/31') & extra long driveway. Situated on an amazing 605 square meter (6512 square foot) pie shaped lot that's fully fenced & landscaped with oversize composite deck, stunning stamped concrete patio & sidewalk, & storage shed- nothing to do but move in! Prime location near Manning Town Centre, schools, shopping, & transit with quick access to the Anthony Henday!

Built in 2013

### Essential Information

MLS® # E4441016

Price \$649,900



Bedrooms	4
Bathrooms	3.00
Full Baths	3
Square Footage	2,629
Acres	0.00
Year Built	2013
Type	Single Family
Sub-Type	Detached Single Family
Style	2 Storey
Status	Active

### **Community Information**

Address	8818 180a Avenue
Area	Edmonton
Subdivision	Klarvatten
City	Edmonton
County	ALBERTA
Province	AB
Postal Code	T5Z 0J4

### **Amenities**

Amenities	Air Conditioner, Ceiling 9 ft., Deck, No Smoking Home, Parking-Extra
Parking Spaces	5
Parking	Tandem, Triple Garage Attached

### **Interior**

Interior Features	ensuite bathroom
Appliances	Air Conditioning-Central, Dishwasher-Built-In, Dryer, Garage Control, Garage Opener, Hood Fan, Oven-Microwave, Refrigerator, Storage Shed, Stove-Electric, Washer, Window Coverings, See Remarks
Heating	Forced Air-1, Natural Gas
Fireplaces	Tile Surround
Stories	2
Has Basement	Yes
Basement	Full, Unfinished

### **Exterior**

Exterior	Wood, Stone, Vinyl
Exterior Features	Cul-De-Sac, Fenced, Flat Site, Landscaped, Low Maintenance

Landscape, No Through Road, Private Setting, Schools, Shopping  
Nearby

Roof	Asphalt Shingles
Construction	Wood, Stone, Vinyl
Foundation	Concrete Perimeter

### **School Information**

Elementary	Lago Lindo School
Middle	Dickinsfield School
High	Queen Elizabeth School

### **Additional Information**

Date Listed	June 6th, 2025
Days on Market	40
Zoning	Zone 28

DATA IS DEEMED RELIABLE BUT IS NOT GUARANTEED ACCURATE BY THE REALTORS® ASSOCIATION OF EDMONTON. COPYRIGHT 2025 BY THE REALTORS® ASSOCIATION OF EDMONTON. ALL RIGHTS RESERVED. Trademarks are owned or controlled by the Canadian Real Estate Association (CREA) and identify real estate professionals who are members of CREA (REALTOR®, REALTORS®) and/or the quality of services they provide (MLS®, Multiple Listing Service®)

Listing information last updated on July 16th, 2025 at 5:17pm MDT