

Courtesy Of Jeff D Jackson Of Bode

## \$655,500 - 2828 65 Street, Edmonton

MLS® #E4441536

**\$655,500**

4 Bedroom, 3.00 Bathroom, 2,216 sqft

Single Family on 0.00 Acres

Mattson, Edmonton, AB

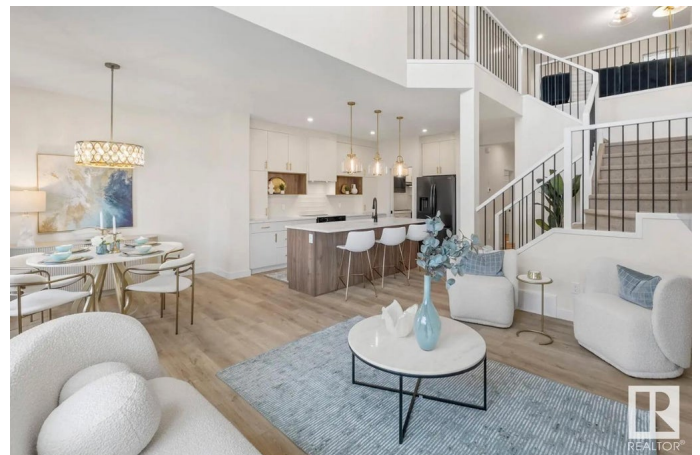
With 1,994 sq. ft. of expertly crafted living space, the Victor is more than just a home—it's a showstopper. From the moment you step inside, you're greeted by soaring open-to-above ceilings in both the great room and stairwell, creating a bright, expansive atmosphere that truly sets this home apart. The main floor features a fluid open-concept layout, where the kitchen, dining area, and great room all flow together for effortless entertaining and day-to-day living. The kitchen is as functional as it is beautiful, with a large island, hood fan above the stove, walk-through pantry, and full quartz countertops that extend into the bathrooms for a seamless, elevated look. The side entrance adds flexibility for potential future development or separate access. Upstairs, you'll find a versatile bonus room, a convenient laundry room, and three well-sized bedrooms—including a standout primary bedroom with a walk-in closet, spa-inspired ensuite, dual sinks, a drop-in tub, and separate shower. Photos representative

Built in 2025

### Essential Information

MLS® # E4441536

Price \$655,500



Bedrooms	4
Bathrooms	3.00
Full Baths	3
Square Footage	2,216
Acres	0.00
Year Built	2025
Type	Single Family
Sub-Type	Detached Single Family
Style	2 Storey
Status	Active

### **Community Information**

Address	2828 65 Street
Area	Edmonton
Subdivision	Mattson
City	Edmonton
County	ALBERTA
Province	AB
Postal Code	T6X 1Z4

### **Amenities**

Amenities	No Animal Home, No Smoking Home, See Remarks
Parking Spaces	4
Parking	Double Garage Attached

### **Interior**

Interior Features	ensuite bathroom
Appliances	None
Heating	Forced Air-1, Natural Gas
Fireplace	Yes
Fireplaces	Insert
Stories	2
Has Basement	Yes
Basement	Full, Unfinished

### **Exterior**

Exterior	Wood, Fiber Cement, Stone, Vinyl
Exterior Features	Schools, Shopping Nearby
Roof	Asphalt Shingles

Construction	Wood, Fiber Cement, Stone, Vinyl
Foundation	Concrete Perimeter

**Additional Information**

Date Listed	June 10th, 2025
Days on Market	6
Zoning	Zone 53

DATA IS DEEMED RELIABLE BUT IS NOT GUARANTEED ACCURATE BY THE REALTORS® ASSOCIATION OF EDMONTON. COPYRIGHT 2025 BY THE REALTORS® ASSOCIATION OF EDMONTON. ALL RIGHTS RESERVED.Trademarks are owned or controlled by the Canadian Real Estate Association (CREA) and identify real estate professionals who are members of CREA (REALTOR®, REALTORS®) and/or the quality of services they provide (MLS®, Multiple Listing Service®)

Listing information last updated on June 16th, 2025 at 8:32pm MDT