

\$459,900 - 21331 89 Avenue, Edmonton

MLS® #E4441898

\$459,900

3 Bedroom, 2.00 Bathroom, 1,100 sqft

Single Family on 0.00 Acres

Suder Greens, Edmonton, AB

Welcome to this charming 4 level split in Suder Greens. Imagine sitting on the covered front porch sipping iced tea in this lovely neighborhood. Step inside to the welcoming openness of the Livingroom and Kitchen. The kitchen has plenty of cabinets and counterspace with an eating bar plus a walk in pantry. The large eating area is open to the kitchen and livingroom. The upper level has an open loft area perfect for an office or play area. The primary bedroom has a walk in closet and direct access to the main bathroom and the second bedroom is a good size. The fully finished 3rd level has laminate flooring, a large rec room, bright bathroom and a large bedroom with walk in closet. The 4th level is ready for development and has a separated area with the laundry and utility room. Many features include a new Hot Water Tank and new AC, stainless steel appliances, double detached garage and a fenced backyard with lovely fruit trees. Well taken care of. This home is ready for new owners to love it!

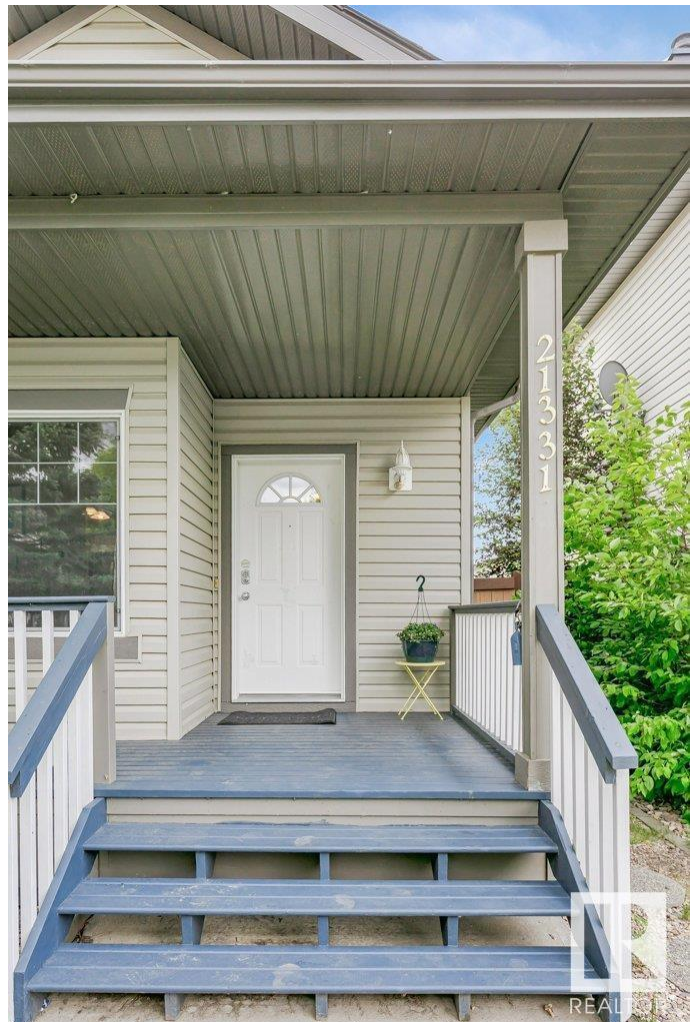
Built in 2003

Essential Information

MLS® # E4441898

Price \$459,900

Bedrooms 3



Bathrooms	2.00
Full Baths	2
Square Footage	1,100
Acres	0.00
Year Built	2003
Type	Single Family
Sub-Type	Detached Single Family
Style	4 Level Split
Status	Active

Community Information

Address	21331 89 Avenue
Area	Edmonton
Subdivision	Suder Greens
City	Edmonton
County	ALBERTA
Province	AB
Postal Code	T5T 6V4

Amenities

Amenities	Air Conditioner, Deck, Detectors Smoke, Exterior Walls- 2"x6", No Smoking Home
Parking	Double Garage Detached

Interior

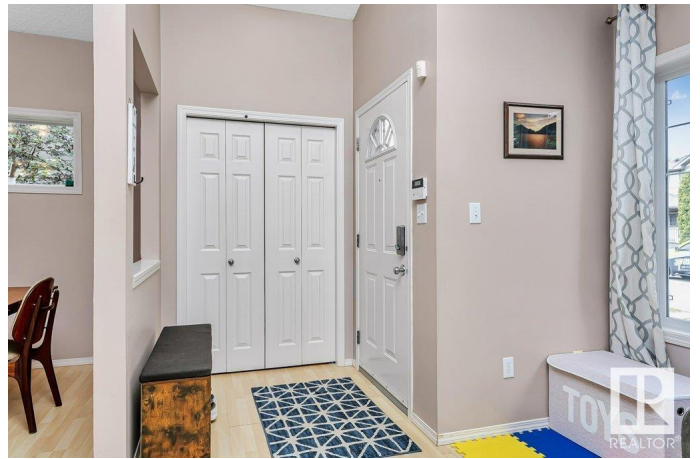
Appliances	Air Conditioning-Central, Dishwasher-Built-In, Dryer, Garage Opener, Stove-Electric, Washer, Curtains and Blinds
Heating	Forced Air-1, Natural Gas
Stories	3
Has Basement	Yes
Basement	Full, Partially Finished

Exterior

Exterior	Wood, Vinyl
Exterior Features	Back Lane, Fenced, Golf Nearby, Landscaped, Public Transportation
Roof	Asphalt Shingles
Construction	Wood, Vinyl
Foundation	Concrete Perimeter

Additional Information

Date Listed June 12th, 2025
Days on Market 16
Zoning Zone 58



DATA IS DEEMED RELIABLE BUT IS NOT GUARANTEED ACCURATE BY THE REALTORS® ASSOCIATION OF EDMONTON. COPYRIGHT 2025 BY THE REALTORS® ASSOCIATION OF EDMONTON. ALL RIGHTS RESERVED. Trademarks are owned or controlled by the Canadian Real Estate Association (CREA) and identify real estate professionals who are members of CREA (REALTOR®, REALTORS®) and/or the quality of services they provide (MLS®, Multiple Listing Service®)

Listing information last updated on June 28th, 2025 at 4:32am MDT