

## \$525,000 - 18936 91 Avenue, Edmonton

MLS® #E4442005

**\$525,000**

4 Bedroom, 3.00 Bathroom, 1,323 sqft

Single Family on 0.00 Acres

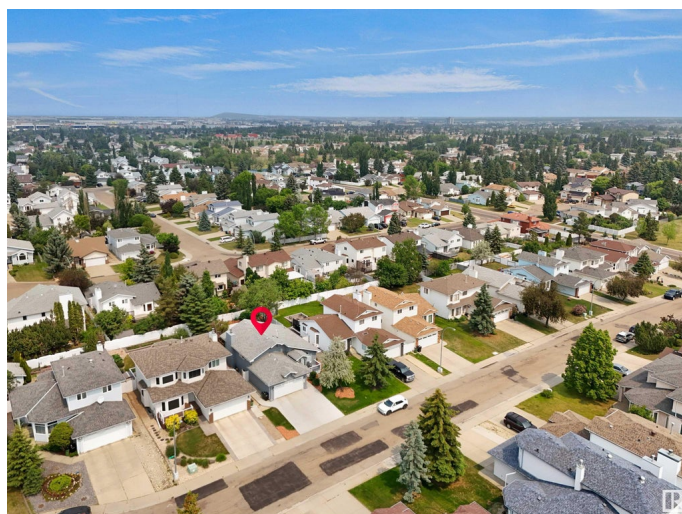
Belmead, Edmonton, AB

Welcome to this stunning 4-level split home featuring a stylish stucco exterior and a spacious double attached garage. With 4 bedrooms and 3 full baths, this beautifully maintained property offers ample living space, including a fully finished basement. Updates include: HWT 2020, Garage Door 2020, Some Appliances 2021, Driveway 2021, Furnace & Humidifier 2021, Sump Pump 2023. Conveniently located near West Edmonton Mall, this home provides easy access to White mud Drive and Anthony Henday, making commuting a breeze. A fantastic opportunity for comfortable family living in a prime location!

Built in 1991

### Essential Information

MLS® #	E4442005
Price	\$525,000
Bedrooms	4
Bathrooms	3.00
Full Baths	3
Square Footage	1,323
Acres	0.00
Year Built	1991
Type	Single Family
Sub-Type	Detached Single Family
Style	4 Level Split



Status Active

### Community Information

Address 18936 91 Avenue  
Area Edmonton  
Subdivision Belmead  
City Edmonton  
County ALBERTA  
Province AB  
Postal Code T5T 5V9

### Amenities

Amenities Air Conditioner, Deck, Detectors Smoke, No Animal Home, See Remarks  
Parking Spaces 4  
Parking Double Garage Attached

### Interior

Interior Features ensuite bathroom  
Appliances Air Conditioning-Central, Dishwasher-Built-In, Dryer, Garage Opener, Oven-Microwave, Refrigerator, Storage Shed, Stove-Electric, Washer, Window Coverings  
Heating Forced Air-1, Natural Gas  
Stories 4  
Has Basement Yes  
Basement Full, Finished

### Exterior

Exterior Wood, Stucco  
Exterior Features Fenced, Golf Nearby, Landscaped, No Back Lane, Playground Nearby, Public Transportation, Schools, Shopping Nearby, See Remarks  
Roof Asphalt Shingles  
Construction Wood, Stucco  
Foundation Concrete Perimeter

### Additional Information

Date Listed June 12th, 2025  
Days on Market 4  
Zoning Zone 20

DATA IS DEEMED RELIABLE BUT IS NOT GUARANTEED ACCURATE BY THE REALTORS® ASSOCIATION OF

EDMONTON. COPYRIGHT 2025 BY THE REALTORS® ASSOCIATION OF EDMONTON. ALL RIGHTS RESERVED.Trademarks are owned or controlled by the Canadian Real Estate Association (CREA) and identify real estate professionals who are members of CREA (REALTOR®, REALTORS®) and/or the quality of services they provide (MLS®, Multiple Listing Service®)

Listing information last updated on June 16th, 2025 at 5:47pm MDT