

\$499,000 - 9016 210 Street, Edmonton

MLS® #E4442134

\$499,000

3 Bedroom, 3.00 Bathroom, 1,510 sqft

Single Family on 0.00 Acres

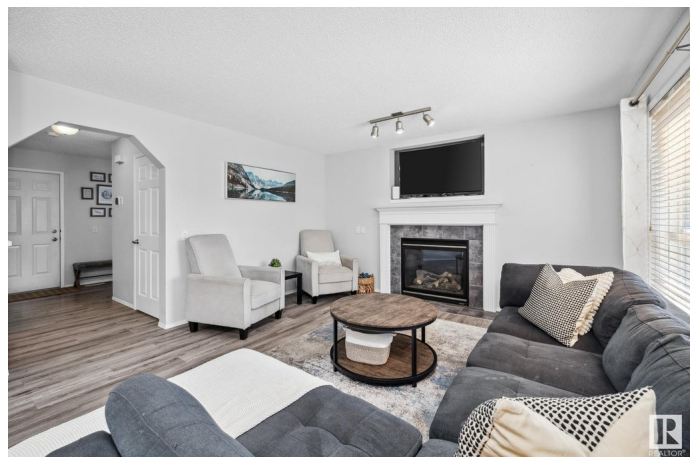
Suder Greens, Edmonton, AB

Are you searching for a FULLY FINISHED HOME with a LARGE WEST FACING BACK YARD & A/C? This turnkey home is ready to meet YOU! This home features an open concept main floor, with a spacious kitchen â€“ updated with quartz countertops incl eating bar & stainless appliances. The dining area can easily fit a 6 person table w/ direct access to the deck & backyard. Love a cozy night in front of the fireplace? The great room is the perfect spot to relax & unwind. Also on the main floor is the 1½ bath & laundry room. Upstairs, the primary suite is large enough for a king bed w/ a large walk-in closet & full ensuite. There are also 2 more bedrooms & the main bath. Downstairs is fully finished w/ a family room & 1½ bath. The backyard is HUGE w/ a large deck, garden boxes & plenty of space to enjoy. Furnace, HWT & Roof all recently done. Donâ€™t delay, this oneâ€™s special! Visit the REALTORâ€™s website for more details.

Built in 2003

Essential Information

| | |
|-----------|-----------|
| MLS® # | E4442134 |
| Price | \$499,000 |
| Bedrooms | 3 |
| Bathrooms | 3.00 |



| | |
|----------------|------------------------|
| Full Baths | 2 |
| Half Baths | 2 |
| Square Footage | 1,510 |
| Acres | 0.00 |
| Year Built | 2003 |
| Type | Single Family |
| Sub-Type | Detached Single Family |
| Style | 2 Storey |
| Status | Active |

Community Information

| | |
|-------------|-----------------|
| Address | 9016 210 Street |
| Area | Edmonton |
| Subdivision | Suder Greens |
| City | Edmonton |
| County | ALBERTA |
| Province | AB |
| Postal Code | T5T 6X1 |

Amenities

| | |
|-----------|---------------------------------|
| Amenities | Deck, Smart/Program. Thermostat |
| Parking | Double Garage Attached |

Interior

| | |
|-------------------|--|
| Interior Features | ensuite bathroom |
| Appliances | Air Conditioning-Central, Alarm/Security System, Dishwasher-Built-In, Dryer, Garage Control, Garage Opener, Hood Fan, Oven-Microwave, Refrigerator, Stove-Electric, Washer, Window Coverings |
| Heating | Forced Air-1, Natural Gas |
| Fireplace | Yes |
| Fireplaces | Mantel, Tile Surround |
| Stories | 3 |
| Has Basement | Yes |
| Basement | Full, Finished |

Exterior

| | |
|-------------------|---|
| Exterior | Wood, Stone, Vinyl |
| Exterior Features | Back Lane, Fenced, Flat Site, Golf Nearby, Landscaped, Low Maintenance Landscape, Playground Nearby, Public Transportation, |

Schools, Shopping Nearby

| | |
|--------------|--------------------|
| Roof | Asphalt Shingles |
| Construction | Wood, Stone, Vinyl |
| Foundation | Concrete Perimeter |

School Information

| | |
|------------|---------------|
| Elementary | Winterburn |
| Middle | Michael Phair |
| High | Michael Phair |

Additional Information

| | |
|----------------|-----------------|
| Date Listed | June 12th, 2025 |
| Days on Market | 5 |
| Zoning | Zone 58 |

DATA IS DEEMED RELIABLE BUT IS NOT GUARANTEED ACCURATE BY THE REALTORS® ASSOCIATION OF EDMONTON. COPYRIGHT 2025 BY THE REALTORS® ASSOCIATION OF EDMONTON. ALL RIGHTS RESERVED. Trademarks are owned or controlled by the Canadian Real Estate Association (CREA) and identify real estate professionals who are members of CREA (REALTOR®, REALTORS®) and/or the quality of services they provide (MLS®, Multiple Listing Service®)

Listing information last updated on June 16th, 2025 at 9:47pm MDT