

\$429,000 - 10 6214 Cartmell Court, Edmonton

MLS® #E4443505

\$429,000

3 Bedroom, 2.50 Bathroom, 1,399 sqft

Condo / Townhouse on 0.00 Acres

Chappelle Area, Edmonton, AB

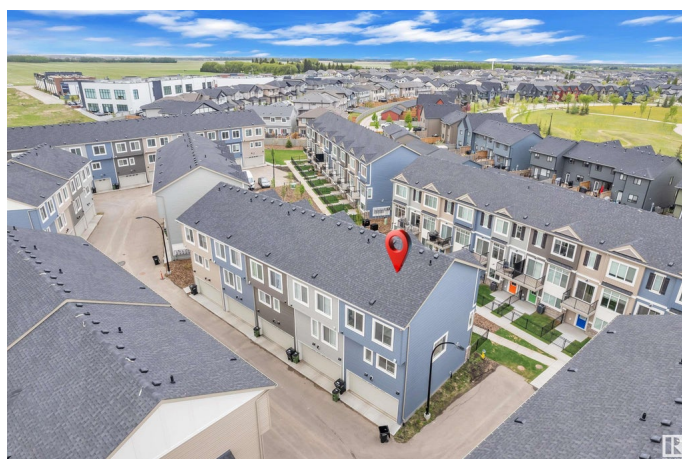
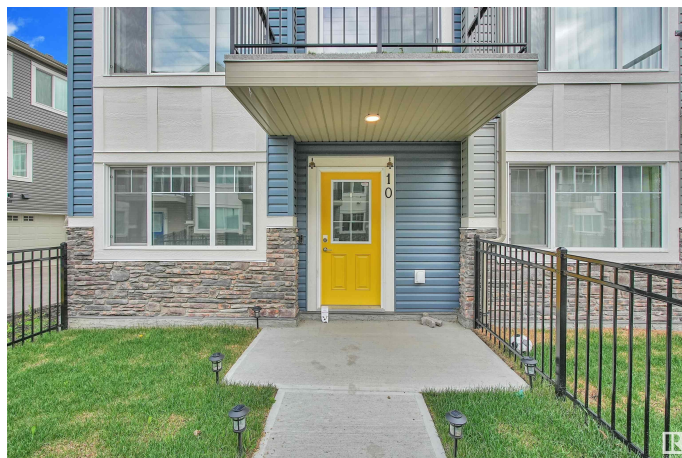
Modern End Unit Townhome built in 2023 By Landmark Homes with OFFICE on Main floor & Attached Double Car Garage the vibrant community of Chappelle. This bright and stylish home features main Floor OFFICE ,3 BEDROOMS & 2.5 bathrooms, and a spacious open-concept layout with large side windows for extra natural light. The kitchen includes sleek stainless steel appliances and ample cabinet space with QUARTZ Countertop perfect for daily living and entertaining. Featuring a functional main floor office, this home is perfect for remote work or a quiet study space..One of the standout features is the double car garage, providing secure parking and additional storage space. As an end unit, enjoy added privacy and more outdoor exposure. Located just steps away from public transit, parks, schools, and major amenities, this home is also near the upcoming Walmart development, adding even more value and convenience. Donâ€™t miss your chance to own this beautiful, move-in-ready home in the thriving neighborhood of Chappelle.

Built in 2023

Essential Information

MLS® # E4443505

Price \$429,000



Bedrooms	3
Bathrooms	2.50
Full Baths	2
Half Baths	1
Square Footage	1,399
Acres	0.00
Year Built	2023
Type	Condo / Townhouse
Sub-Type	Townhouse
Style	3 Storey
Status	Active

Community Information

Address	10 6214 Cartmell Court
Area	Edmonton
Subdivision	Chappelle Area
City	Edmonton
County	ALBERTA
Province	AB
Postal Code	T6W 3L5

Amenities

Amenities	Ceiling 9 ft., No Animal Home, No Smoking Home, Natural Gas BBQ Hookup
Parking	Double Garage Attached

Interior

Interior Features	ensuite bathroom
Appliances	Dishwasher-Built-In, Dryer, Garage Opener, Microwave Hood Fan, Refrigerator, Stove-Electric, Washer, Window Coverings
Heating	Forced Air-1, Natural Gas
Stories	3
Has Basement	Yes
Basement	None, No Basement

Exterior

Exterior	Wood, Stone, Vinyl
Exterior Features	Airport Nearby, Corner Lot, Landscaped, Playground Nearby, Public Transportation, Schools, Shopping Nearby

Roof	Asphalt Shingles
Construction	Wood, Stone, Vinyl
Foundation	Concrete Perimeter

Additional Information

Date Listed	June 20th, 2025
Days on Market	9
Zoning	Zone 55
Condo Fee	\$205

DATA IS DEEMED RELIABLE BUT IS NOT GUARANTEED ACCURATE BY THE REALTORS® ASSOCIATION OF EDMONTON. COPYRIGHT 2025 BY THE REALTORS® ASSOCIATION OF EDMONTON. ALL RIGHTS RESERVED. Trademarks are owned or controlled by the Canadian Real Estate Association (CREA) and identify real estate professionals who are members of CREA (REALTOR®, REALTORS®) and/or the quality of services they provide (MLS®, Multiple Listing Service®)

Listing information last updated on June 29th, 2025 at 10:02am MDT