

## \$424,900 - 13024 64 Street, Edmonton

MLS® #E4443731

**\$424,900**

3 Bedroom, 2.50 Bathroom, 1,419 sqft

Single Family on 0.00 Acres

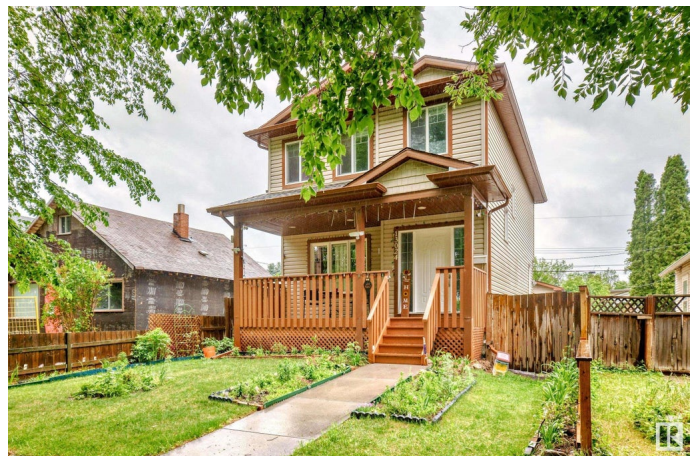
Belvedere, Edmonton, AB

Welcome to this well-maintained two-story home in Belvedere! This charming 1,419 sq. ft. home features 3 bedrooms, 2.5 bathrooms, and an unfinished basement ready for your personal touch. Just a few steps away is the double detached garage. Not only does the home have a beautiful front porch, it also has a large deck in the backyard, perfect for hosting BBQ's! During the hot summer months, the central A/C will keep you comfortable year-round. Conveniently located near shopping centers like Costco, LRT, and with easy access to the Yellowhead and Anthony Henday, this home offers both comfort and convenience. Whether you're a first-time homebuyer or an investor, this property is a must-see!

Built in 2011

### Essential Information

MLS® #	E4443731
Price	\$424,900
Bedrooms	3
Bathrooms	2.50
Full Baths	2
Half Baths	1
Square Footage	1,419
Acres	0.00



Year Built	2011
Type	Single Family
Sub-Type	Detached Single Family
Style	2 Storey
Status	Active

### Community Information

Address	13024 64 Street
Area	Edmonton
Subdivision	Belvedere
City	Edmonton
County	ALBERTA
Province	AB
Postal Code	T5A 0Y2

### Amenities

Amenities	Air Conditioner
Parking	Double Garage Detached

### Interior

Interior Features	ensuite bathroom
Appliances	Air Conditioning-Central, Dishwasher-Built-In, Dryer, Garage Opener, Microwave Hood Fan, Stove-Electric, Washer, Refrigerators-Two, Curtains and Blinds
Heating	Forced Air-1, Natural Gas
Stories	2
Has Basement	Yes
Basement	Full, Unfinished

### Exterior

Exterior	Wood, Vinyl
Exterior Features	Fenced, Schools, Shopping Nearby
Roof	Asphalt Shingles
Construction	Wood, Vinyl
Foundation	Concrete Perimeter

### Additional Information

Date Listed	June 21st, 2025
Days on Market	8

## Zoning

## Zone 02

DATA IS DEEMED RELIABLE BUT IS NOT GUARANTEED ACCURATE BY THE REALTORS® ASSOCIATION OF EDMONTON. COPYRIGHT 2025 BY THE REALTORS® ASSOCIATION OF EDMONTON. ALL RIGHTS RESERVED. Trademarks are owned or controlled by the Canadian Real Estate Association (CREA) and identify real estate professionals who are members of CREA (REALTOR®, REALTORS®) and/or the quality of services they provide (MLS®, Multiple Listing Service®)

Listing information last updated on June 29th, 2025 at 5:32pm MDT