

\$359,900 - 10912 155 Street, Edmonton

MLS® #E4444368

\$359,900

3 Bedroom, 2.00 Bathroom, 1,041 sqft
Single Family on 0.00 Acres

High Park (Edmonton), Edmonton, AB

Excellent infill opportunity in High Park with this large 50x148 rectangular lot, ideal for future development. Located on a quiet street close High Park School, 156 St, 111 Ave, Yellowhead Trail, and downtown access, this property offers excellent potential. A prime west-end location known for infill growth, this lot combines size, shape, and location to support a strong long-term investment in one of Edmonton's evolving neighbourhoods.

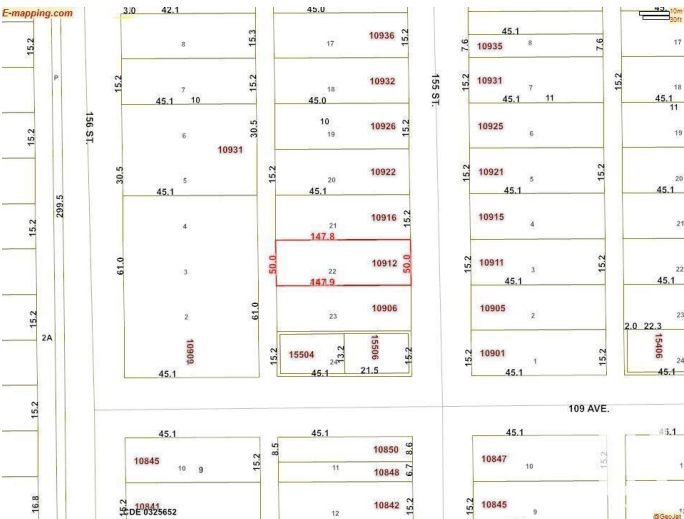
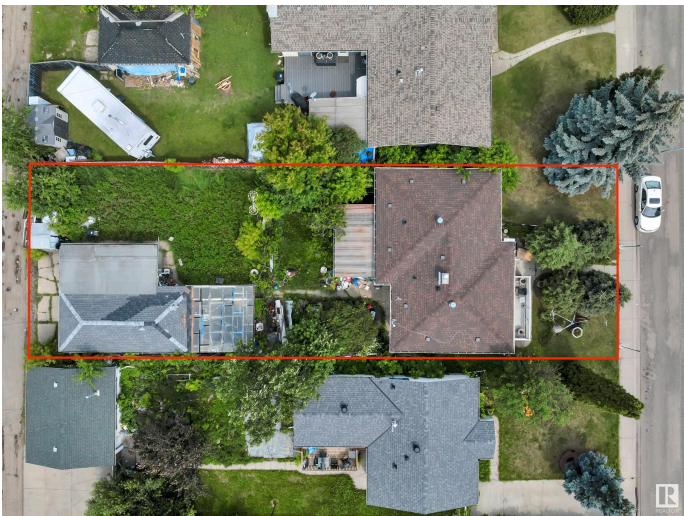
Built in 1958

Essential Information

| | |
|----------------|------------------------|
| MLS® # | E4444368 |
| Price | \$359,900 |
| Bedrooms | 3 |
| Bathrooms | 2.00 |
| Full Baths | 2 |
| Square Footage | 1,041 |
| Acres | 0.00 |
| Year Built | 1958 |
| Type | Single Family |
| Sub-Type | Detached Single Family |
| Style | Bungalow |
| Status | Active |

Community Information

Address 10912 155 Street



| | |
|-------------|----------------------|
| Area | Edmonton |
| Subdivision | High Park (Edmonton) |
| City | Edmonton |
| County | ALBERTA |
| Province | AB |
| Postal Code | T5P 2N1 |

Amenities

| | |
|-----------|------------------------|
| Amenities | Infill Property |
| Parking | Double Garage Detached |

Interior

| | |
|--------------|---|
| Appliances | Dryer, Freezer, Washer, Refrigerators-Two, Stoves-Two |
| Heating | Forced Air-1, Natural Gas |
| Stories | 2 |
| Has Basement | Yes |
| Basement | Full, Finished |

Exterior

| | |
|-------------------|---|
| Exterior | Wood, Brick, Stucco |
| Exterior Features | Back Lane, Flat Site, Public Transportation, Schools, Shopping Nearby |
| Roof | Asphalt Shingles |
| Construction | Wood, Brick, Stucco |
| Foundation | Concrete Perimeter |

Additional Information

| | |
|----------------|-----------------|
| Date Listed | June 26th, 2025 |
| Days on Market | 22 |
| Zoning | Zone 21 |

DATA IS DEEMED RELIABLE BUT IS NOT GUARANTEED ACCURATE BY THE REALTORS® ASSOCIATION OF EDMONTON. COPYRIGHT 2025 BY THE REALTORS® ASSOCIATION OF EDMONTON. ALL RIGHTS RESERVED. Trademarks are owned or controlled by the Canadian Real Estate Association (CREA) and identify real estate professionals who are members of CREA (REALTOR®, REALTORS®) and/or the quality of services they provide (MLS®, Multiple Listing Service®)

Listing information last updated on July 18th, 2025 at 4:32am MDT