

\$215,000 - 5722 143 Avenue, Edmonton

MLS® #E4444434

\$215,000

3 Bedroom, 1.50 Bathroom, 1,151 sqft

Condo / Townhouse on 0.00 Acres

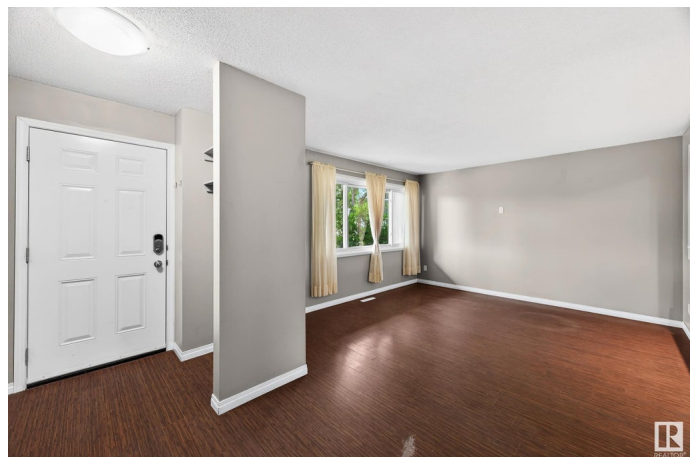
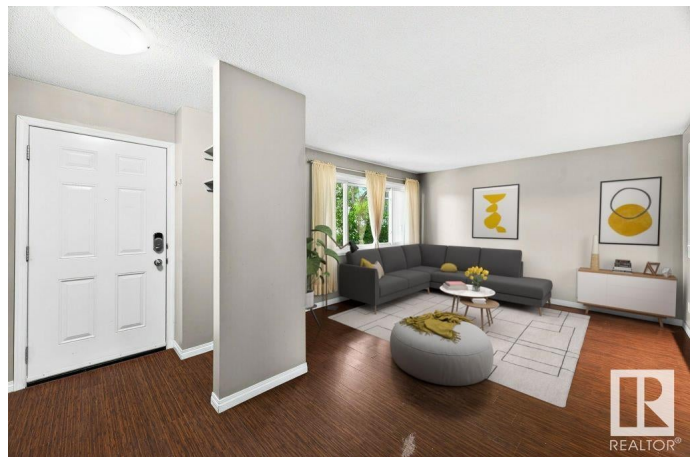
York, Edmonton, AB

Welcome to this well-kept 3-bedroom, 2-bathroom townhome offering comfortable living with thoughtful updates. Inside, you'll find generous room sizes and an upgraded kitchen with ample cabinetry and storage, making meal prep and daily living easy. The main living area flows nicely to the private, fenced backyard—perfect for relaxing or entertaining—while backing onto peaceful greenspace for added privacy. Upstairs, the bedrooms are spacious with good light and functional layout. This home is ideally situated near shopping, schools, and transit, providing convenient access to daily needs. A practical choice for anyone seeking space, value, and location.

Built in 1967

Essential Information

| | |
|----------------|-----------|
| MLS® # | E4444434 |
| Price | \$215,000 |
| Bedrooms | 3 |
| Bathrooms | 1.50 |
| Full Baths | 1 |
| Half Baths | 1 |
| Square Footage | 1,151 |
| Acres | 0.00 |
| Year Built | 1967 |



| | |
|----------|-------------------|
| Type | Condo / Townhouse |
| Sub-Type | Townhouse |
| Style | 2 Storey |
| Status | Active |

Community Information

| | |
|-------------|-----------------|
| Address | 5722 143 Avenue |
| Area | Edmonton |
| Subdivision | York |
| City | Edmonton |
| County | ALBERTA |
| Province | AB |
| Postal Code | T5A 1K1 |

Amenities

| | |
|-----------|------------------------------------------------------------------|
| Amenities | On Street Parking, Detectors Smoke, No Smoking Home, See Remarks |
| Parking | Stall |

Interior

| | |
|--------------|----------------------------------------------------------------------------------|
| Appliances | Dishwasher-Built-In, Dryer, Oven-Microwave, Refrigerator, Stove-Electric, Washer |
| Heating | Forced Air-1, Natural Gas |
| Stories | 2 |
| Has Basement | Yes |
| Basement | Full, Partially Finished |

Exterior

| | |
|-------------------|------------------------------------------------------------------------------------------------------------------------------------------|
| Exterior | Wood, Brick |
| Exterior Features | Fenced, Golf Nearby, Landscaped, Level Land, No Back Lane, Playground Nearby, Public Transportation, Schools, Shopping Nearby, Treed Lot |
| Roof | Asphalt Shingles |
| Construction | Wood, Brick |
| Foundation | Concrete Perimeter |

School Information

| | |
|------------|-----------------------|
| Elementary | York School |
| Middle | Steele Heights School |
| High | M.E. LaZerte School |

Additional Information

| | |
|----------------|-----------------|
| Date Listed | June 26th, 2025 |
| Days on Market | 22 |
| Zoning | Zone 02 |
| Condo Fee | \$424 |

DATA IS DEEMED RELIABLE BUT IS NOT GUARANTEED ACCURATE BY THE REALTORS® ASSOCIATION OF EDMONTON. COPYRIGHT 2025 BY THE REALTORS® ASSOCIATION OF EDMONTON. ALL RIGHTS RESERVED.Trademarks are owned or controlled by the Canadian Real Estate Association (CREA) and identify real estate professionals who are members of CREA (REALTOR®, REALTORS®) and/or the quality of services they provide (MLS®, Multiple Listing Service®)

Listing information last updated on July 18th, 2025 at 4:32am MDT