

## **\$549,900 - 9228 92 Street, Edmonton**

MLS® #E4447230

**\$549,900**

4 Bedroom, 3.00 Bathroom, 1,668 sqft

Single Family on 0.00 Acres

Bonnie Doon, Edmonton, AB

LOCATION!! Custom & 'well built 1650+ sqft duplex! Superb curb appeal, well landscaped in desirable Bonnie Doon! Immediately inviting to a good sized entrance which lead into large living room great for conversation and enjoys an oversized bay window. Fantastic floorplan for professional couples or families as easily accomodate large gatherings and bright w/ many oversized windows throughout. Beautiful main floor hardwood floors lead to the huge chef's island kitchen, upgraded appliances, plenty of cabinets/countertops and is perfect place to entertain. Off kitchen is a dining area AND a super cozy family room with surrounding windows, gas fireplace and views of WEST backyard. The laundry rm, walkin pantry and bath complete the main floor. Upstairs has a kingsized master suite with its walkin closet & ensuite. Also are 2 add'l large bedrooms and full bath. Separate entrance leads downstairs to an inlaw suite with kitchen, dining, living, bdm, bath and storage or laundry. Oversized WEST deck for BBQ

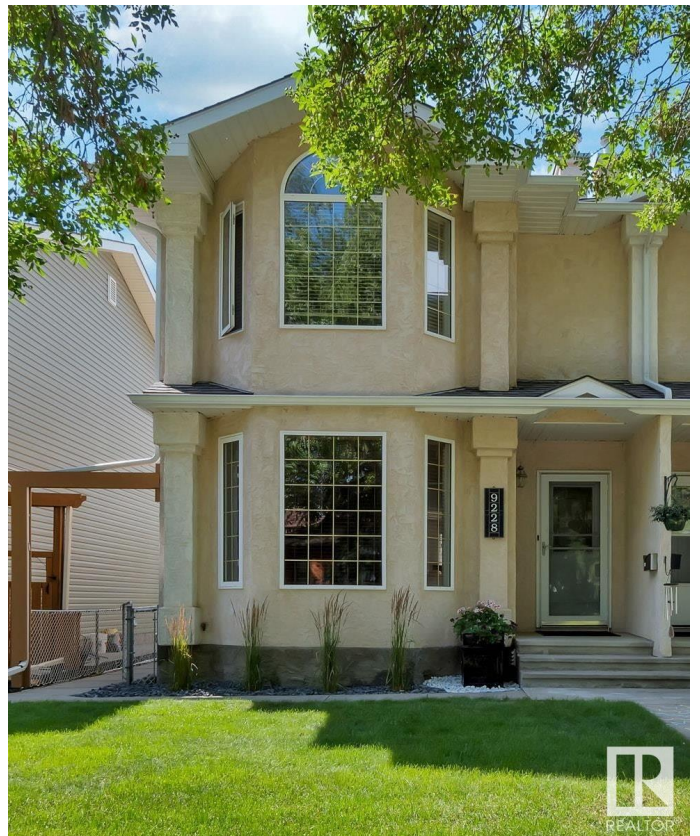
Built in 1995

### **Essential Information**

MLS® # E4447230

Price \$549,900

Bedrooms 4



Bathrooms	3.00
Full Baths	2
Half Baths	2
Square Footage	1,668
Acres	0.00
Year Built	1995
Type	Single Family
Sub-Type	Half Duplex
Style	2 Storey
Status	Active

### Community Information

Address	9228 92 Street
Area	Edmonton
Subdivision	Bonnie Doon
City	Edmonton
County	ALBERTA
Province	AB
Postal Code	T6C 3R5

### Amenities

Amenities	Deck, No Animal Home, No Smoking Home, Vinyl Windows
Parking	2 Outdoor Stalls

### Interior

Interior Features	ensuite bathroom
Appliances	Dishwasher-Built-In, Dryer, Hood Fan, Oven-Microwave, Washer, Window Coverings, Refrigerators-Two, Stoves-Two
Heating	Forced Air-1, Natural Gas
Fireplace	Yes
Fireplaces	Granite Surround
Stories	3
Has Basement	Yes
Basement	Full, Finished

### Exterior

Exterior	Wood, Stucco
Exterior Features	Fenced, Flat Site, Golf Nearby, Low Maintenance Landscape, Public Transportation, Schools, Shopping Nearby

Roof	Asphalt Shingles
Construction	Wood, Stucco
Foundation	Concrete Perimeter

**Additional Information**

Date Listed	July 11th, 2025
Days on Market	16
Zoning	Zone 18



DATA IS DEEMED RELIABLE BUT IS NOT GUARANTEED ACCURATE BY THE REALTORS® ASSOCIATION OF EDMONTON. COPYRIGHT 2025 BY THE REALTORS® ASSOCIATION OF EDMONTON. ALL RIGHTS RESERVED.Trademarks are owned or controlled by the Canadian Real Estate Association (CREA) and identify real estate professionals who are members of CREA (REALTOR®, REALTORS®) and/or the quality of services they provide (MLS®, Multiple Listing Service®)

Listing information last updated on July 26th, 2025 at 10:17pm MDT