

## \$564,900 - 2 Wakefield Place, Leduc

MLS® #E4447268

**\$564,900**

5 Bedroom, 3.00 Bathroom, 1,488 sqft

Single Family on 0.00 Acres

Windrose, Leduc, AB

Visit the Listing Brokerage (and/or listing REALTOR®) website to obtain additional information. Be the first to live in this fully renovated 1488 sq ft former showhome in Windrose, Leduc. An additional 1165 sq ft finished basement makes this bright bi-level perfect for large families, with five bedrooms, three bathrooms, and main floor laundry room. Features include 9-foot ceilings, west-facing windows, fresh paint, new pot lights, quartz counters, vinyl plank flooring, and plush carpet with new shingles in 2021. Main floor offers three bedrooms, including a primary bedroom with walk-in closet, jetted tub, and shower. Open kitchen, dining, and living space is great for entertaining. Basement includes two bedrooms, tiled shower, rec room, utility room, storage, with freshly steam-cleaned carpets and suspended ceilings. Heated 21x24 garage with tin finishing on all sides and central vac, and a matching shed plus fire pit in backyard. Located near schools and minutes from Hwy 39, QE2, and Edmonton Airport.

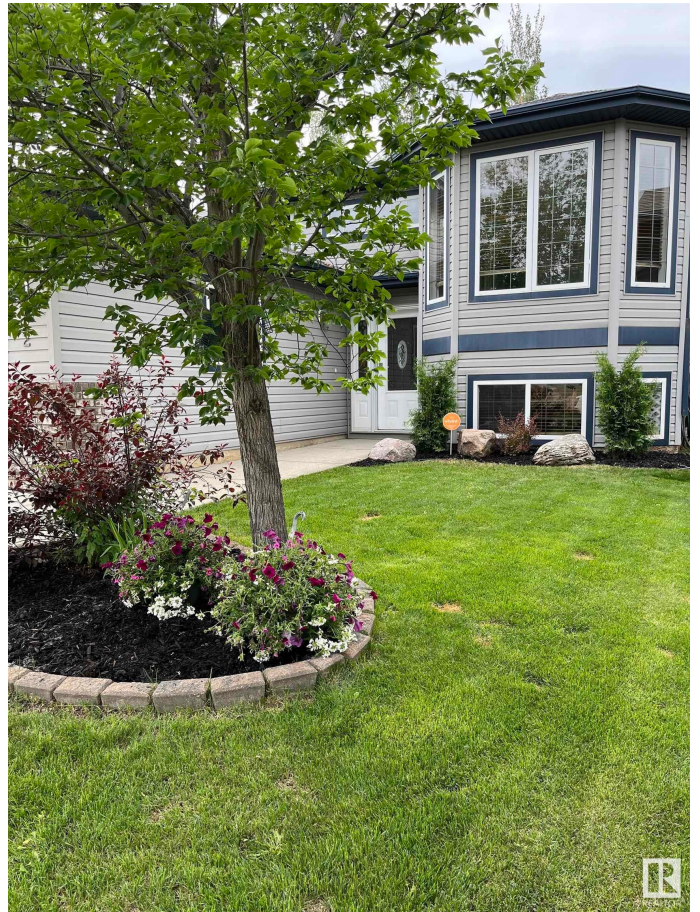
Built in 2002

### Essential Information

MLS® # E4447268

Price \$564,900

Bedrooms 5



Bathrooms	3.00
Full Baths	3
Square Footage	1,488
Acres	0.00
Year Built	2002
Type	Single Family
Sub-Type	Detached Single Family
Style	Bi-Level
Status	Active

### **Community Information**

Address	2 Wakefield Place
Area	Leduc
Subdivision	Windrose
City	Leduc
County	ALBERTA
Province	AB
Postal Code	T9E 8E7

### **Amenities**

Amenities	Air Conditioner, Fire Pit
Parking Spaces	4
Parking	Double Garage Attached

### **Interior**

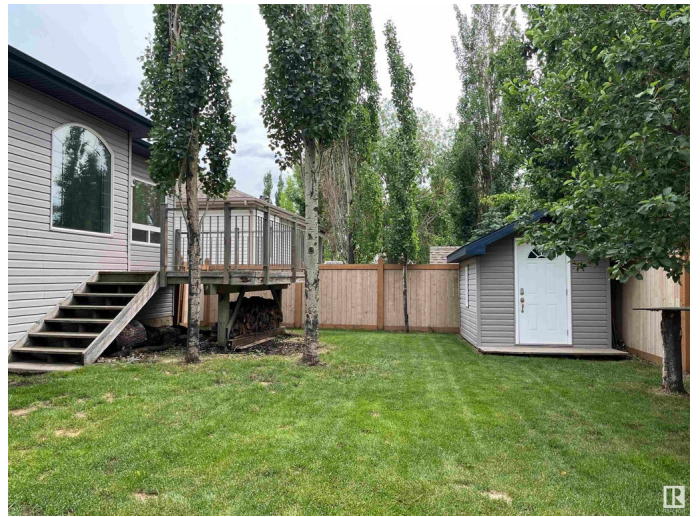
Interior Features	ensuite bathroom
Appliances	Air Conditioning-Central, Dishwasher-Built-In, Dryer, Oven-Microwave, Refrigerator, Stove-Electric, Washer
Heating	Forced Air-1, Natural Gas
Stories	2
Has Basement	Yes
Basement	Full, Finished

### **Exterior**

Exterior	Wood, Vinyl
Exterior Features	Airport Nearby, Fenced
Roof	Asphalt Shingles
Construction	Wood, Vinyl
Foundation	Concrete Perimeter

## Additional Information

Date Listed            July 11th, 2025  
Days on Market       66  
Zoning                 Zone 81



DATA IS DEEMED RELIABLE BUT IS NOT GUARANTEED ACCURATE BY THE REALTORS® ASSOCIATION OF EDMONTON. COPYRIGHT 2025 BY THE REALTORS® ASSOCIATION OF EDMONTON. ALL RIGHTS RESERVED. Trademarks are owned or controlled by the Canadian Real Estate Association (CREA) and identify real estate professionals who are members of CREA (REALTOR®, REALTORS®) and/or the quality of services they provide (MLS®, Multiple Listing Service®)

Listing information last updated on September 15th, 2025 at 11:48am MDT