

\$299,000 - 9e Castle Terrace, Edmonton

MLS® #E4447379

\$299,000

3 Bedroom, 1.50 Bathroom, 1,004 sqft

Condo / Townhouse on 0.00 Acres

Caernarvon, Edmonton, AB

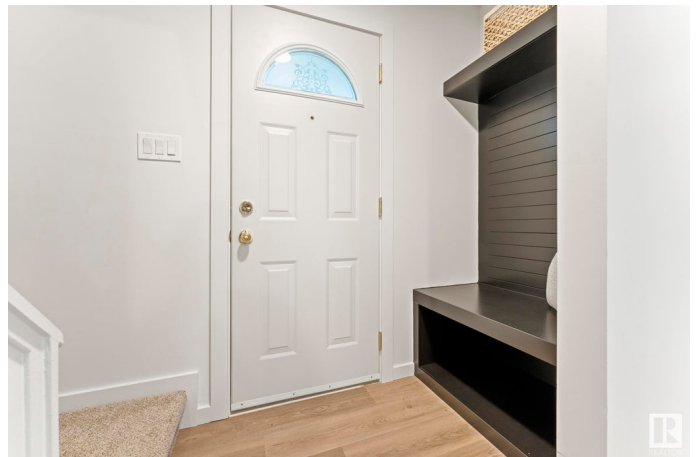
FANTASTIC PARK LOCATION! This **FULLY RENOVATED** townhome (1 original owner) is absolutely exquisite! Beautifully located, directly backing onto greenspace with a very **PRIVATE YARD** - it just doesn't get any better. As soon as you step inside you will notice the superior craftsmanship & premium upgrades. Quality vinyl plank flooring, a stunning kitchen with quartz counters, high end s/s appliances, custom bathrooms, numerous designer accents and a newer HE furnace & HWT – all the big ticket items have been done! The open floorplan has a lovely living room with a big picture window flowing through to a stylish dining area & gorgeous kitchen. Upstairs has 3 generous bedrooms, plenty of closet space & a new modern bathroom with glass shower. The exterior has 2 entrance doors & a private fenced yard facing the park! Castle Terrace is a well managed complex with a very healthy Reserve Fund. Close to great schools and major shopping, this affordable home is perfect for the first time buyer! **WELCOME HOME!**

Built in 1976

Essential Information

MLS® # E4447379

Price \$299,000



Bedrooms	3
Bathrooms	1.50
Full Baths	1
Half Baths	1
Square Footage	1,004
Acres	0.00
Year Built	1976
Type	Condo / Townhouse
Sub-Type	Townhouse
Style	2 Storey
Status	Active

Community Information

Address	9e Castle Terrace
Area	Edmonton
Subdivision	Caernarvon
City	Edmonton
County	ALBERTA
Province	AB
Postal Code	T5X 2E6

Amenities

Amenities	Detectors Smoke, No Animal Home, No Smoking Home, Vinyl Windows
Parking	Stall

Interior

Appliances	Dryer, Microwave Hood Fan, Refrigerator, Stove-Electric, Washer
Heating	Forced Air-1, Natural Gas
Stories	2
Has Basement	Yes
Basement	Full, Unfinished

Exterior

Exterior	Wood, Vinyl
Exterior Features	Backs Onto Park/Trees, No Back Lane, Playground Nearby, Private Setting, Public Transportation, Schools, Shopping Nearby, See Remarks
Roof	Asphalt Shingles
Construction	Wood, Vinyl
Foundation	Concrete Perimeter

Additional Information

Date Listed	July 11th, 2025
Days on Market	60
Zoning	Zone 27
Condo Fee	\$319

DATA IS DEEMED RELIABLE BUT IS NOT GUARANTEED ACCURATE BY THE REALTORS® ASSOCIATION OF EDMONTON. COPYRIGHT 2025 BY THE REALTORS® ASSOCIATION OF EDMONTON. ALL RIGHTS RESERVED.Trademarks are owned or controlled by the Canadian Real Estate Association (CREA) and identify real estate professionals who are members of CREA (REALTOR®, REALTORS®) and/or the quality of services they provide (MLS®, Multiple Listing Service®)

Listing information last updated on September 9th, 2025 at 6:32pm MDT