

## **\$629,900 - 8361 Shaske Crescent, Edmonton**

MLS® #E4447625

**\$629,900**

4 Bedroom, 3.50 Bathroom, 2,054 sqft

Single Family on 0.00 Acres

South Terwillegar, Edmonton, AB

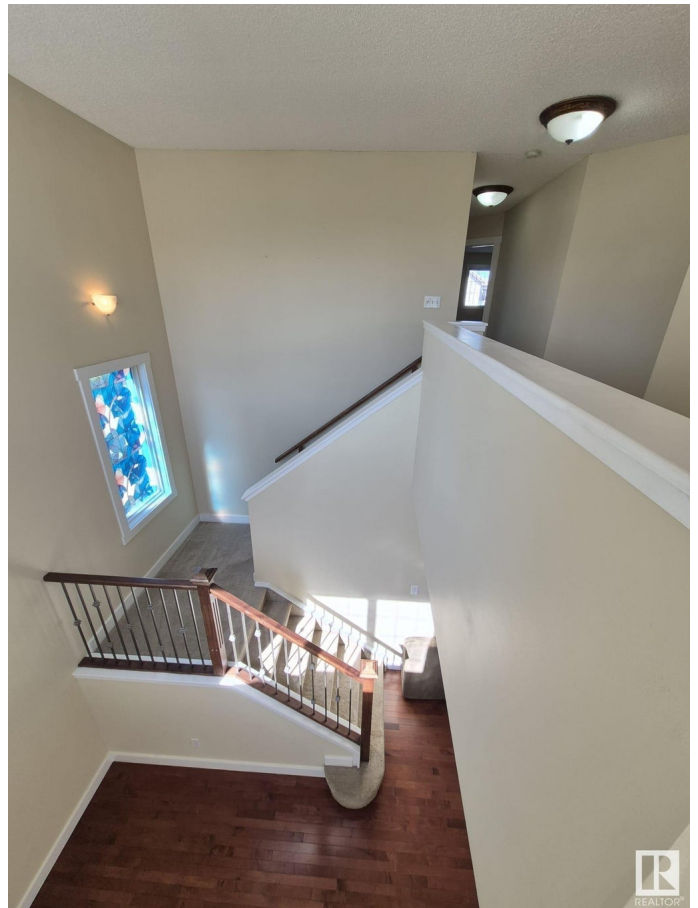
A great family home! On a quiet side street in South Terwillegar, this OUTSTANDING 2,053 sq.ft. with a professionally finished basement provides over 2,800 sq ft of quality living. The bright open plan provides 17' high ceilings at the front entrance and includes a great kitchen, large eating nook, a spacious main floor Great Room, a HUGE Bonus Room over the garage. The 3 bedrooms on the upper level are large and the master bedroom provides and a luxury 5 piece ensuite. Other highlights include hardwood/tile flooring, maple and iron railings, and a prof. finished basement with Rec Room, a 4th bedroom, and 3 piece bath with a custom walk in shower (should be in a designer magazine)! The west facing yard backs onto a walkway and provides all landscaping, extra storage and a large deck. This house freshly painted, new dryer, few new blinds, new fridge, new showerheads in all bathrooms, deck done in 2023, newer hot water tank, carpet replaced in 2021, new garage door and much more. A must see!

Built in 2006

### **Essential Information**

MLS® # E4447625

Price \$629,900



Bedrooms	4
Bathrooms	3.50
Full Baths	3
Half Baths	1
Square Footage	2,054
Acres	0.00
Year Built	2006
Type	Single Family
Sub-Type	Detached Single Family
Style	2 Storey
Status	Active

### Community Information

Address	8361 Shaske Crescent
Area	Edmonton
Subdivision	South Terwillegar
City	Edmonton
County	ALBERTA
Province	AB
Postal Code	T6R 0B4

### Amenities

Amenities	Deck
Parking	Double Garage Attached

### Interior

Interior Features	ensuite bathroom
Appliances	Dishwasher-Built-In, Dryer, Garage Opener, Refrigerator, Stove-Electric, Washer, Window Coverings
Heating	Forced Air-1, Natural Gas
Stories	3
Has Basement	Yes
Basement	Full, Finished

### Exterior

Exterior	Wood, Vinyl
Exterior Features	Fenced, Landscaped, Public Transportation, Schools, Shopping Nearby
Roof	Asphalt Shingles
Construction	Wood, Vinyl

Foundation                      Concrete Perimeter

### **Additional Information**

Date Listed                      July 14th, 2025

Days on Market                13

Zoning                              Zone 14



DATA IS DEEMED RELIABLE BUT IS NOT GUARANTEED ACCURATE BY THE REALTORS® ASSOCIATION OF EDMONTON. COPYRIGHT 2025 BY THE REALTORS® ASSOCIATION OF EDMONTON. ALL RIGHTS RESERVED. Trademarks are owned or controlled by the Canadian Real Estate Association (CREA) and identify real estate professionals who are members of CREA (REALTOR®, REALTORS®) and/or the quality of services they provide (MLS®, Multiple Listing Service®)

Listing information last updated on July 27th, 2025 at 3:17pm MDT