

\$149,900 - 308 11441 Ellerslie Road, Edmonton

MLS® #E4448175

\$149,900

1 Bedroom, 1.00 Bathroom, 663 sqft

Condo / Townhouse on 0.00 Acres

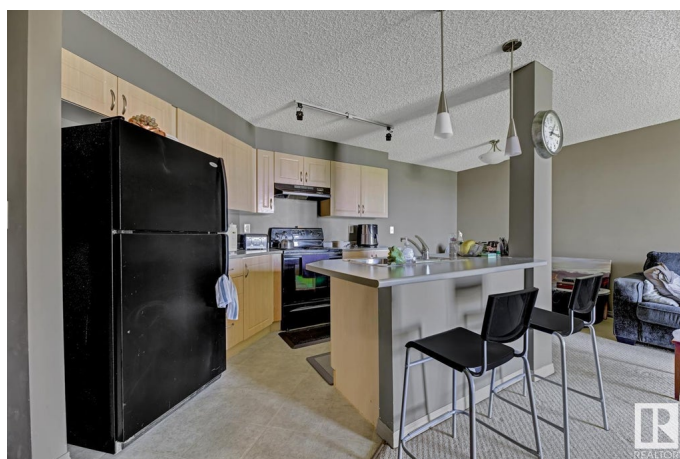
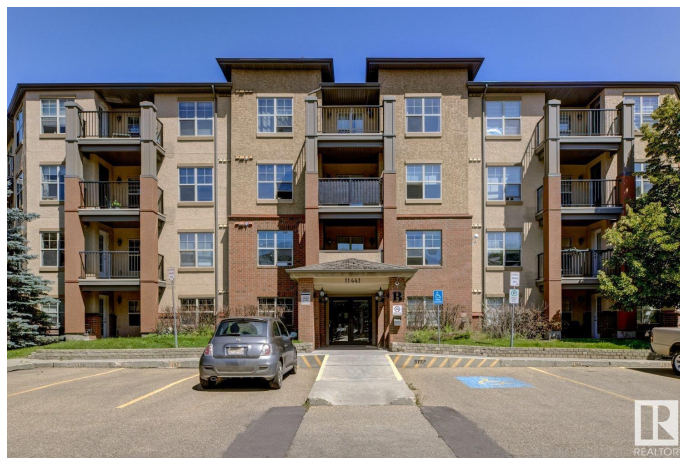
Rutherford (Edmonton), Edmonton, AB

LIVE IN RUTHERFORD VILLAGE! This one bedroom, 3rd floor north facing condo, is perfect for students or professionals. Features include: open concept, efficient layout, modern colors, walk through closet, covered balcony with gas BBQ, ensuite laundry, underground parking and storage room. Rutherford Village offers elevators, visitor parking and is pet friendly. All utilities are included in the condo fees including power. Located within walking distance to shopping and public transport. Quick access to Anthony Henday Drive, Calgary Trail and Edmonton Airport. **WELCOME HOME!**

Built in 2005

Essential Information

MLS® #	E4448175
Price	\$149,900
Bedrooms	1
Bathrooms	1.00
Full Baths	1
Square Footage	663
Acres	0.00
Year Built	2005
Type	Condo / Townhouse
Sub-Type	Lowrise Apartment
Style	Single Level Apartment



Status Active

Community Information

Address 308 11441 Ellerslie Road
Area Edmonton
Subdivision Rutherford (Edmonton)
City Edmonton
County ALBERTA
Province AB
Postal Code T6W 1S9

Amenities

Amenities Intercom, Parking-Visitor, Storage-Locker Room, Vinyl Windows
Parking Spaces 1
Parking Heated, Underground

Interior

Appliances Dishwasher-Built-In, Refrigerator, Stacked Washer/Dryer, Stove-Electric
Heating Baseboard, Natural Gas
of Stories 4
Stories 1
Has Basement Yes
Basement None, No Basement

Exterior

Exterior Wood, Brick, Stucco
Exterior Features Flat Site, Golf Nearby, Landscaped, Park/Reserve, Public Transportation, Schools, Shopping Nearby
Roof Asphalt Shingles
Construction Wood, Brick, Stucco
Foundation Concrete Perimeter

Additional Information

Date Listed July 17th, 2025
Days on Market 12
Zoning Zone 55
Condo Fee \$453

DATA IS DEEMED RELIABLE BUT IS NOT GUARANTEED ACCURATE BY THE REALTORS® ASSOCIATION OF EDMONTON. COPYRIGHT 2025 BY THE REALTORS® ASSOCIATION OF EDMONTON. ALL RIGHTS RESERVED. Trademarks are owned or controlled by the Canadian Real Estate Association (CREA) and identify real

estate professionals who are members of CREA (REALTOR®®, REALTORS®®) and/or the quality of services they provide (MLS®®, Multiple Listing Service®®)

Listing information last updated on July 29th, 2025 at 10:03am MDT