

\$254,900 - 5419 Hill View Crescent, Edmonton

MLS® #E4449540

\$254,900

3 Bedroom, 1.50 Bathroom, 1,206 sqft
Condo / Townhouse on 0.00 Acres

Hillview, Edmonton, AB

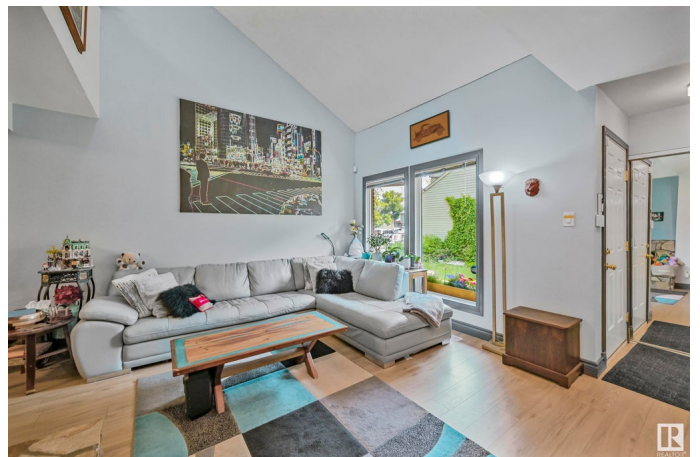
Welcome to this charming 2-storey END UNIT OPEN-TO-BELOW townhome in the established community of Hillview! Offering 1,206 sq ft of living space, the main floor features a wood-burning fireplace, a bright living and dining area, an updated white kitchen with quartz counters, and a convenient 2-piece bath. Upstairs, all 3 bedrooms—including a spacious primary—boast vaulted ceilings, with a full 4-piece bath completing the upper level. The partially finished basement offers a great rec space, laundry area, and plenty of storage. Step outside to your private WEST-FACING backyard oasis with mature trees and a garden retreat. New dishwasher & fridge (2025), Daiken 2 stage furnace (2022), HWT (2024), Vanity & toilet (2023). Includes 2 powered surface parking stalls and is located in a well-maintained complex close to schools, parks, shopping, public transit, and major routes like Whitemud Drive and 50th Street. A perfect blend of comfort, charm, and convenience!

Built in 1979

Essential Information

MLS® # E4449540

Price \$254,900



Bedrooms	3
Bathrooms	1.50
Full Baths	1
Half Baths	1
Square Footage	1,206
Acres	0.00
Year Built	1979
Type	Condo / Townhouse
Sub-Type	Townhouse
Style	2 Storey
Status	Active

Community Information

Address	5419 Hill View Crescent
Area	Edmonton
Subdivision	Hillview
City	Edmonton
County	ALBERTA
Province	AB
Postal Code	T6L 1V9

Amenities

Amenities	Patio, Vaulted Ceiling, See Remarks
Parking Spaces	2
Parking	2 Outdoor Stalls

Interior

Appliances	Dishwasher-Built-In, Freezer, Microwave Hood Fan, Oven-Built-In, Refrigerator, Stacked Washer/Dryer, Window Coverings
Heating	Forced Air-1, Natural Gas
Fireplace	Yes
Fireplaces	Stone Facing
Stories	3
Has Basement	Yes
Basement	Full, Partially Finished

Exterior

Exterior	Wood, Vinyl
Exterior Features	Fenced, Golf Nearby, Landscaped, Playground Nearby, Public

Swimming Pool, Public Transportation, Schools, Shopping Nearby

Roof	Asphalt Shingles
Construction	Wood, Vinyl
Foundation	Concrete Perimeter

School Information

Elementary	Hillview School
Middle	Edith Rogers School
High	W.P. Wagner School

Additional Information

Date Listed	July 24th, 2025
Days on Market	10
Zoning	Zone 29
Condo Fee	\$376

DATA IS DEEMED RELIABLE BUT IS NOT GUARANTEED ACCURATE BY THE REALTORS® ASSOCIATION OF EDMONTON. COPYRIGHT 2025 BY THE REALTORS® ASSOCIATION OF EDMONTON. ALL RIGHTS RESERVED. Trademarks are owned or controlled by the Canadian Real Estate Association (CREA) and identify real estate professionals who are members of CREA (REALTOR®, REALTORS®) and/or the quality of services they provide (MLS®, Multiple Listing Service®)

Listing information last updated on August 3rd, 2025 at 1:32am MDT