

Courtesy Of Shauna S Ylagan Of Lange Realty Ltd

\$1,577,700 - 5715 110 Street, Edmonton

MLS® #E4450770

\$1,577,700

4 Bedroom, 3.50 Bathroom, 2,573 sqft

Single Family on 0.00 Acres

Pleasantview (Edmonton), Edmonton, AB

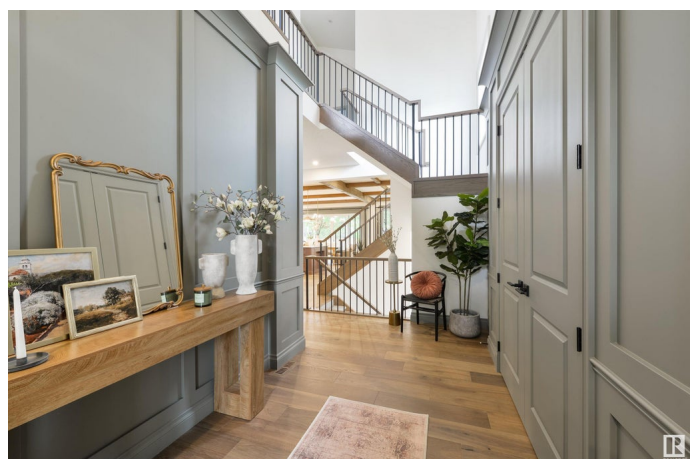
Ace Lange's INFILL SHOWHOME is for sale in our favourite community... Pleasantview.

Centrally located and close to everything, this property is perfect for the busy professional commuting to U of A, local hospitals, & downtown Edmonton. Truly a MUST SEE, the Ace Lange designer really outdid herself on this one. Attention to detail is outstanding and quality craftsmanship is exactly what you would expect from this well respected builder who has been building since 1963 in our city! From the wall paneling, to the built-ins, to the granite fireplace showstopper, plus the matching hood fan, ceiling beams, smooth painted ceilings, vibrant colours (swanky moss green, rich purple, savvy blue hues), modern woods & wallpaper, this showhome IS A TEN. You will be proud to host guests speaking to every element in the home like you are telling a story from the past. Mature trees surround the home and offer views from every room. Comes w/ AC, garage heater, epoxy flooring, deck, landscaping, & fully finished basement.

Built in 2022

Essential Information

MLS® #	E4450770
Price	\$1,577,700
Lease Rate	\$39



Bedrooms	4
Bathrooms	3.50
Full Baths	3
Half Baths	1
Square Footage	2,573
Acres	0.00
Year Built	2022
Type	Single Family
Sub-Type	Detached Single Family
Style	2 Storey
Status	Active

Community Information

Address	5715 110 Street
Area	Edmonton
Subdivision	Pleasantview (Edmonton)
City	Edmonton
County	ALBERTA
Province	AB
Postal Code	T6H 3E4

Amenities

Amenities	Air Conditioner, Ceiling 10 ft., Deck, Smart/Program. Thermostat, Infill Property, HRV System, Natural Gas BBQ Hookup, 9 ft. Basement Ceiling
Parking	Double Garage Attached, Heated

Interior

Interior Features	ensuite bathroom
Appliances	Air Conditioning-Central, Alarm/Security System, Dishwasher-Built-In, Dryer, Garage Control, Garage Opener, Hood Fan, Oven-Built-In, Oven-Microwave, Refrigerator, Stove-Countertop Gas, Washer, Curtains and Blinds, Garage Heater
Heating	Forced Air-1, Natural Gas
Fireplace	Yes
Fireplaces	Granite Surround
Stories	3
Has Basement	Yes
Basement	Full, Finished

Exterior

Exterior	Wood, Stone, Stucco
Exterior Features	Fenced, Flat Site, Landscaped, No Back Lane, Picnic Area, Playground Nearby, Public Transportation, Schools, Shopping Nearby
Lot Description	39 x 130
Roof	Asphalt Shingles
Construction	Wood, Stone, Stucco
Foundation	Concrete Perimeter

School Information

Elementary	Lendrum Elementary School
Middle	Avalon Jr High School
High	Strathcona High School

Additional Information

Date Listed	August 1st, 2025
Days on Market	55
Zoning	Zone 15

DATA IS DEEMED RELIABLE BUT IS NOT GUARANTEED ACCURATE BY THE REALTORS® ASSOCIATION OF EDMONTON. COPYRIGHT 2025 BY THE REALTORS® ASSOCIATION OF EDMONTON. ALL RIGHTS RESERVED. Trademarks are owned or controlled by the Canadian Real Estate Association (CREA) and identify real estate professionals who are members of CREA (REALTOR®, REALTORS®) and/or the quality of services they provide (MLS®, Multiple Listing Service®)

Listing information last updated on September 24th, 2025 at 11:47pm MDT