

# \$494,700 - 3281 Cherry Crescent, Edmonton

MLS® #E4452078

## \$494,700

3 Bedroom, 2.50 Bathroom, 1,615 sqft  
Single Family on 0.00 Acres

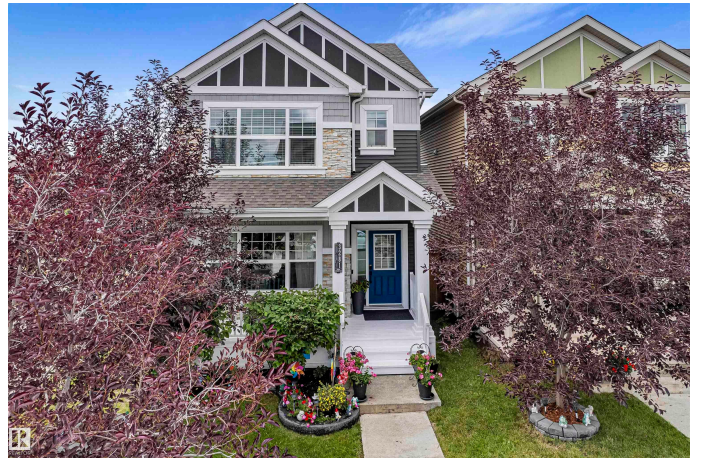
The Orchards At Ellerslie, Edmonton, AB

Discover your dream home in the heart of Orchards on a desirable corner lot. This stunning single-family residence is perfectly situated near schools, parks & shopping centre. The main floor boasts a spacious living area, dining area, powder room, open-concept kitchen with EXTENDED ISLAND, WET BAR. Upstairs, you'll find 2 BEDROOMS, a shared 3PC WASHROOM, and a LUXURIOUS MASTER BEDROOM with a 4PC ENSUITE. Laundry is conveniently situated upstairs for easy access. Backyard oasis features a fully landscaped yard, stylish fencing, and a beautiful deck with sleek glass railing, creating the perfect blend of form and function for relaxation and entertainment. The house has CENTRAL AIR CONDITIONING throughout.

Built in 2017

### Essential Information

MLS® #	E4452078
Price	\$494,700
Bedrooms	3
Bathrooms	2.50
Full Baths	2
Half Baths	1
Square Footage	1,615
Acres	0.00



Year Built	2017
Type	Single Family
Sub-Type	Detached Single Family
Style	2 Storey
Status	Active

### **Community Information**

Address	3281 Cherry Crescent
Area	Edmonton
Subdivision	The Orchards At Ellerslie
City	Edmonton
County	ALBERTA
Province	AB
Postal Code	T6X 1Y5

### **Amenities**

Amenities	See Remarks
Parking	Double Garage Detached

### **Interior**

Interior Features	ensuite bathroom
Appliances	Air Conditioning-Central, Dishwasher-Built-In, Dryer, Refrigerator-Energy Star, Stove-Gas, Washer, Wine/Beverage Cooler
Heating	Forced Air-1, Natural Gas
Stories	2
Has Basement	Yes
Basement	Full, Unfinished

### **Exterior**

Exterior	Wood, Vinyl
Exterior Features	See Remarks
Roof	Asphalt Shingles
Construction	Wood, Vinyl
Foundation	Concrete Perimeter

### **Additional Information**

Date Listed	August 8th, 2025
Days on Market	3
Zoning	Zone 53

HOA Fees 450

HOA Fees Freq. Annually

DATA IS DEEMED RELIABLE BUT IS NOT GUARANTEED ACCURATE BY THE REALTORS® ASSOCIATION OF EDMONTON. COPYRIGHT 2025 BY THE REALTORS® ASSOCIATION OF EDMONTON. ALL RIGHTS RESERVED. Trademarks are owned or controlled by the Canadian Real Estate Association (CREA) and identify real estate professionals who are members of CREA (REALTOR®, REALTORS®) and/or the quality of services they provide (MLS®, Multiple Listing Service®)

Listing information last updated on August 11th, 2025 at 8:32am MDT