

\$550,000 - 8015 Shaske Drive, Edmonton

MLS® #E4452737

\$550,000

3 Bedroom, 3.50 Bathroom, 1,761 sqft

Single Family on 0.00 Acres

South Terwillegar, Edmonton, AB

Terrific 2 storey home located in the desirable neighborhood of south Terwillegar. Open concept kitchen, dining and living room. Kitchen has a large centre island with new dishwasher. Corner walk in pantry, newer fridge and stove. Dining nook with patio doors to composite deck. Corner gas fireplace and big windows in the cozy living room. Main floor laundry with newer machines and ½ bath nearby. Upper bonus room and 3 bedrooms. Primary suite with dual closets including organizers and spacious ensuite boasting soaker tub and over-sized shower. Finished basement with rubber flooring, TV mount with access behind for accessories, also a 3 piece bathroom. Double attached, heated garage. Gorgeous yard with shed and firepit, alley access with oversized gate for ease of use. Home has central A/C. This home needs some cosmetic TLC including new flooring. Close to trails and ponds. Freson Bros and Crumble within walking distance. Close to shopping, restaurants and public transportation.

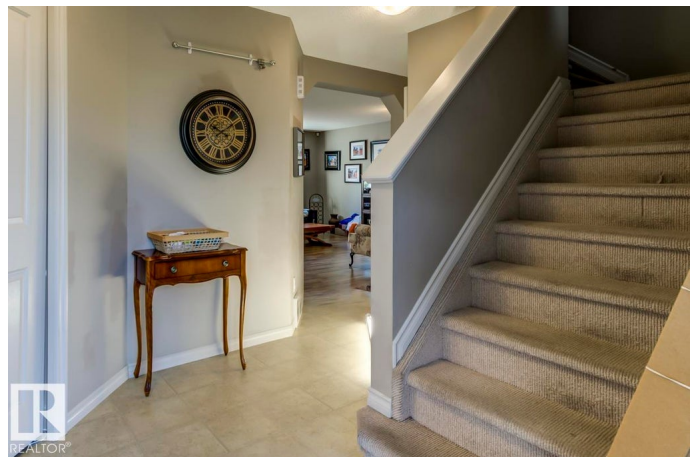
Built in 2005

Essential Information

MLS® # E4452737

Price \$550,000

Bedrooms 3



Bathrooms	3.50
Full Baths	3
Half Baths	1
Square Footage	1,761
Acres	0.00
Year Built	2005
Type	Single Family
Sub-Type	Detached Single Family
Style	2 Storey
Status	Active

Community Information

Address	8015 Shaske Drive
Area	Edmonton
Subdivision	South Terwillegar
City	Edmonton
County	ALBERTA
Province	AB
Postal Code	T6R 3V9

Amenities

Amenities	Air Conditioner, Closet Organizers, Deck, Vinyl Windows
Parking Spaces	4
Parking	Double Garage Attached

Interior

Interior Features	ensuite bathroom
Appliances	Air Conditioning-Central, Dishwasher-Built-In, Dryer, Garage Opener, Microwave Hood Fan, Refrigerator, Storage Shed, Stove-Electric, Washer, Window Coverings
Heating	Forced Air-1, Natural Gas
Fireplace	Yes
Fireplaces	Corner
Stories	3
Has Basement	Yes
Basement	Full, Finished

Exterior

Exterior	Wood, Brick, Vinyl
----------	--------------------

Exterior Features	Back Lane, Fenced, Flat Site, Landscaped, Shopping Nearby
Roof	Asphalt Shingles
Construction	Wood, Brick, Vinyl
Foundation	Concrete Perimeter

Additional Information

Date Listed	August 13th, 2025
Days on Market	3
Zoning	Zone 14

DATA IS DEEMED RELIABLE BUT IS NOT GUARANTEED ACCURATE BY THE REALTORS® ASSOCIATION OF EDMONTON. COPYRIGHT 2025 BY THE REALTORS® ASSOCIATION OF EDMONTON. ALL RIGHTS RESERVED.Trademarks are owned or controlled by the Canadian Real Estate Association (CREA) and identify real estate professionals who are members of CREA (REALTOR®, REALTORS®) and/or the quality of services they provide (MLS®, Multiple Listing Service®)

Listing information last updated on August 16th, 2025 at 12:18pm MDT