

\$199,900 - 2316 139 Avenue, Edmonton

MLS® #E4454656

\$199,900

3 Bedroom, 1.50 Bathroom, 1,034 sqft

Condo / Townhouse on 0.00 Acres

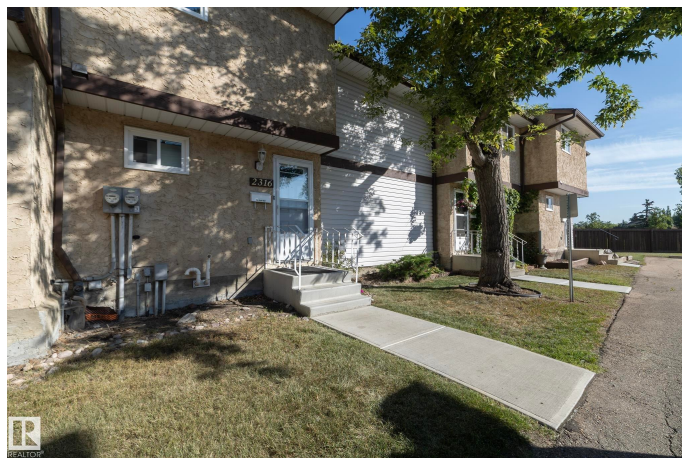
Bannerman, Edmonton, AB

Welcome to this 3 bedroom, 2 full bathroom RENOVATED townhome with FULLY FINISHED BASEMENT in quiet crescent backing on to a play ground and elementary school. This home features a large living room & dining room as well as a spacious kitchen with newer stainless steel appliances. Adjacent to the dining room is a good sized backyard with new vinyl fencing & private setting backing a park. Upstairs offers 3 good sized bedrooms with oversized primary suite. 4piece common bath and plenty of closets. Basement is fully developed & offers a large family room, computer area, storage & laundry. Fantastic location close to shopping center, recreation facility, grocery store, banks and shops. A great place to call home in excellent location.

Built in 1979

Essential Information

MLS® #	E4454656
Price	\$199,900
Bedrooms	3
Bathrooms	1.50
Half Baths	3
Square Footage	1,034
Acres	0.00
Year Built	1979



Type	Condo / Townhouse
Sub-Type	Townhouse
Style	2 Storey
Status	Active

Community Information

Address	2316 139 Avenue
Area	Edmonton
Subdivision	Bannerman
City	Edmonton
County	ALBERTA
Province	AB
Postal Code	T5Y 1R7

Amenities

Amenities	Carbon Monoxide Detectors, Closet Organizers, Detectors Smoke, Parking-Visitor, See Remarks
Parking	Stall

Interior

Appliances	Dishwasher-Built-In, Dryer, Hood Fan, Refrigerator, Stove-Electric, Washer, Window Coverings
Heating	Forced Air-1, Natural Gas
Stories	3
Has Basement	Yes
Basement	Full, Finished

Exterior

Exterior	Wood, Stucco
Exterior Features	Backs Onto Park/Trees, Fenced, Flat Site, Golf Nearby, Landscaped, Park/Reserve, Picnic Area, Playground Nearby, Private Setting, Public Transportation, Schools, Shopping Nearby, See Remarks
Roof	Asphalt Shingles
Construction	Wood, Stucco
Foundation	Concrete Perimeter

Additional Information

Date Listed	August 24th, 2025
Days on Market	2
Zoning	Zone 35

Condo Fee \$250

DATA IS DEEMED RELIABLE BUT IS NOT GUARANTEED ACCURATE BY THE REALTORS® ASSOCIATION OF EDMONTON. COPYRIGHT 2025 BY THE REALTORS® ASSOCIATION OF EDMONTON. ALL RIGHTS RESERVED.Trademarks are owned or controlled by the Canadian Real Estate Association (CREA) and identify real estate professionals who are members of CREA (REALTOR®, REALTORS®) and/or the quality of services they provide (MLS®, Multiple Listing Service®)

Listing information last updated on August 26th, 2025 at 8:47am MDT