

# \$384,900 - 13148 36 Street, Edmonton

MLS® #E4457538

**\$384,900**

3 Bedroom, 2.00 Bathroom, 941 sqft  
Single Family on 0.00 Acres

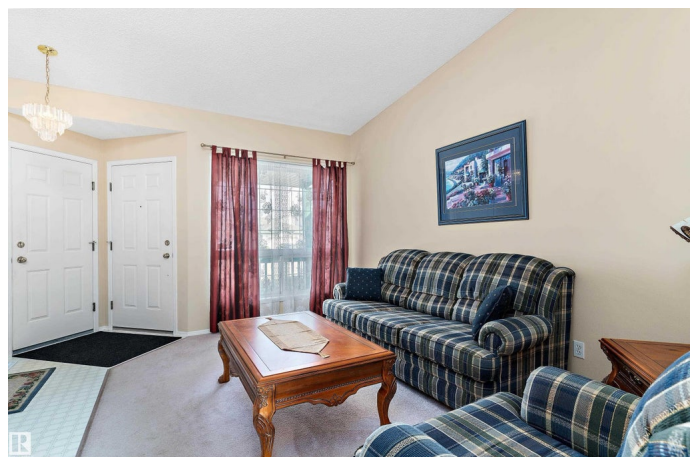
Belmont, Edmonton, AB

Look no further. It's all right here. A clean, well looked after 4 level split, located in a quiet cul de sac, in the family friendly community of Belmont. Current long time owner has meticulously looked after this property and shows pride of ownership throughout. Main floor features a living room and spacious eat in kitchen with patio doors to deck and backyard. Upper level has 2 good sized bedrooms and full bathroom while the third level has a bedroom, full bathroom and rec room with gas fireplace. The basement is unspoiled and offers more possible living space with future development. The backyard features an ample deck for entertaining and enjoying the long summer evenings, as well as a garden area for those with a green thumb and some fruit trees for those who like to bake and make homemade compotes. Belmont Elementary and Elizabeth Seton Elementary/Junior High are a short walk away without having to cross any busy roads. This bright and inviting home awaits a new family to make it its own.

Built in 1997

## Essential Information

MLS® #	E4457538
Price	\$384,900
Bedrooms	3



Bathrooms	2.00
Full Baths	2
Square Footage	941
Acres	0.00
Year Built	1997
Type	Single Family
Sub-Type	Detached Single Family
Style	4 Level Split
Status	Active

### **Community Information**

Address	13148 36 Street
Area	Edmonton
Subdivision	Belmont
City	Edmonton
County	ALBERTA
Province	AB
Postal Code	T5A 5C7

### **Amenities**

Amenities	No Animal Home, No Smoking Home
Parking Spaces	4
Parking	Double Garage Attached

### **Interior**

Appliances	Dishwasher-Built-In, Dryer, Refrigerator, Storage Shed, Stove-Electric, Washer, Window Coverings
Heating	Forced Air-1, Natural Gas
Fireplace	Yes
Fireplaces	Corner
Stories	3
Has Basement	Yes
Basement	Full, Unfinished

### **Exterior**

Exterior	Wood, Vinyl
Exterior Features	Fenced, Fruit Trees/Shrubs, No Back Lane, Playground Nearby, Public Swimming Pool, Public Transportation, Schools, Shopping Nearby
Roof	Asphalt Shingles

Construction Wood, Vinyl  
Foundation Concrete Perimeter

### **Additional Information**

Date Listed September 12th, 2025  
Days on Market 8  
Zoning Zone 35

DATA IS DEEMED RELIABLE BUT IS NOT GUARANTEED ACCURATE BY THE REALTORS® ASSOCIATION OF EDMONTON. COPYRIGHT 2025 BY THE REALTORS® ASSOCIATION OF EDMONTON. ALL RIGHTS RESERVED. Trademarks are owned or controlled by the Canadian Real Estate Association (CREA) and identify real estate professionals who are members of CREA (REALTOR®, REALTORS®) and/or the quality of services they provide (MLS®, Multiple Listing Service®)

Listing information last updated on September 20th, 2025 at 1:47am MDT